

Electromobility in Austria

Facts & Figures | November 2022



3,430
E-vehicles (BEV, M1)
new registrations



215
E-vehicles (BEV, N1)
new registrations



12
E-vehicles (BEV, N2, N3,
M2, M3) new registrations



106,502
E-vehicles (BEV, M1)
Population

2030: 100% E-vehicles (BEV) in new registrations

19%
share of E-vehicles (BEV, M1) in new registrations



➤ Trend in November

In November 3,430 electric cars (BEV, M1) and 215 electric light commercial vehicles (BEV, N1) were newly registered in Austria. The number of E-vehicles (BEV) has increased to 106,502. In the comparison of federal states, Vorarlberg leads with a BEV share of new registrations of 23.59%.

➤ Overview and comments in November 2022

The developments in November continue to point the way towards the electrification of the transport sector. The National Competence Center For Electromobility monitors the facts and figures and compiles a monthly assessment of the relevant developments.

Electric Mobility goes public (transport)

November was marked by announcements of an ambitious charging infrastructure expansion at the branches of major Austrian retailers. SPAR, for example, announced that it would install 1,500 new charging points by 2025 together with the

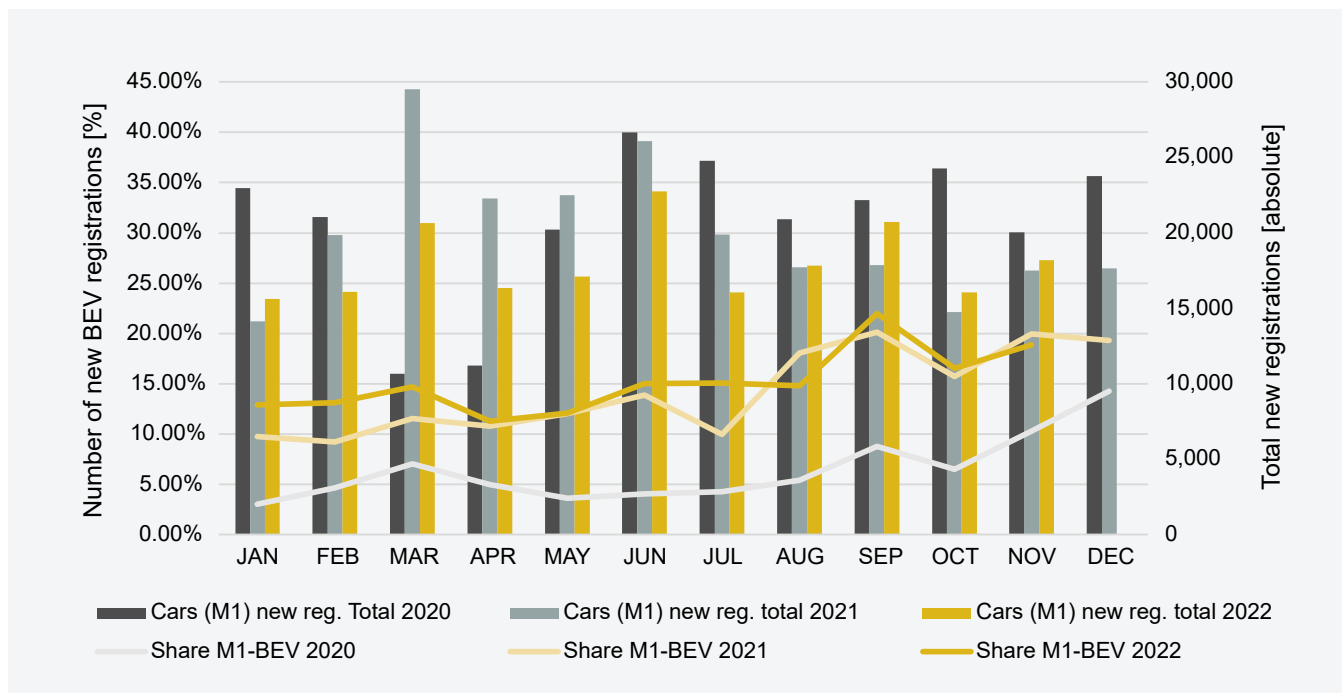
BEÖ, while REWE will equip 120 more locations with fast charging infrastructure in cooperation with Smatrics EnBW.

Just at the turn of the month, a further step towards the electrification of the public transport sector was taken in the area of vehicles: In addition to 10 H₂ fuel cell buses, Wiener Linien (Vienna’s municipal transport operator) is also purchasing 60 battery-electric buses, which will be put into service by the end of 2025.

There are significant developments for Austria’s economy as well: At Magna in Graz, production of the BEV SUV Fisker Ocean began in November, and the stock is to be expanded to a total of over 40,000 units in the coming year.

Source: Electrify.net [09.11.2022, 17.11.2022, 23.11.2022], derStandard.at

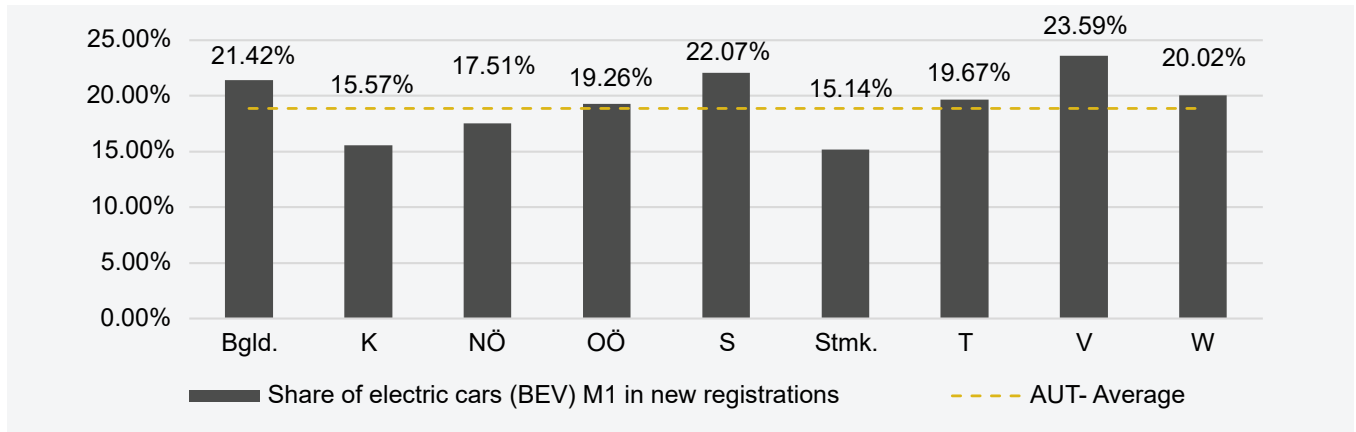
New registrations of e-vehicles per month: e-vehicles (BEV) M1, 2020-2021



Source: Statistics Austria; Data status: End of each month respectively 30.11.2022; Illustration: AustriaTech

New registrations in November 2022

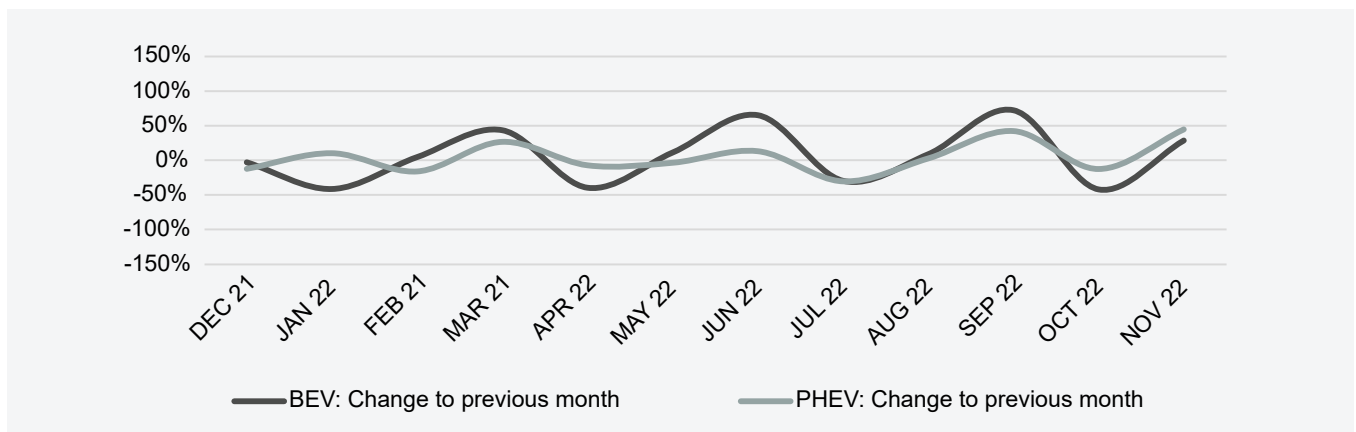
➤ Top 3 in e-vehicles (BEV) M1: V 24% S 22% Bgld. 21%



Source: Statistik Austria; Data status: End of each month, Illustration: AustriaTech

Trend in new registrations, monthly comparison

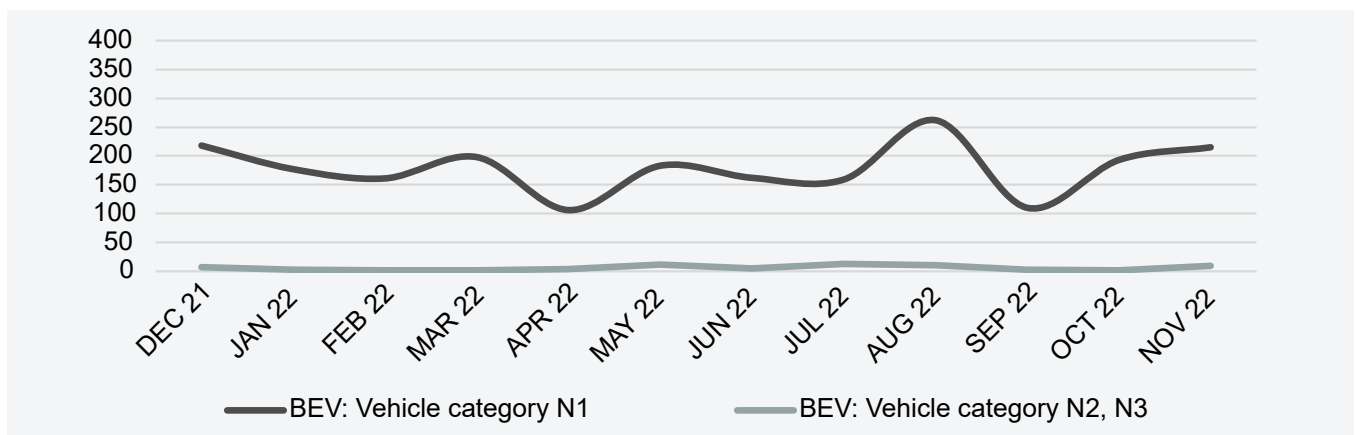
➤ BEV: +29% to previous month / PHEV: +45% to PM



Source: Statistik Austria; Data status: End of each month, Illustration: AustriaTech

New registrations by categories of commercial vehicles

➤ E-LCV (BEV) N1: 215 / E-HGV (BEV) N2, N3: 9



Source: Statistik Austria; Data status: End of each month, Illustration: AustriaTech

New registrations per year by vehicle type, fuel type and energy source

Vehicle types, fuel types or energy source	2013	2014	2015	2016	2017	2018	2019	2020	2021	2022 Nov
Passenger Vehicle Class M1	319,035	303,318	308,555	329,604	353,320	341,068	329,363	248,740	239,803	197,448
Petrol incl. Flex-Fuel	134,276	126,503	122,832	131,756	163,701	184,150	176,706	107,771	91,478	73,252
Diesel	180,901	172,381	179,822	188,820	175,458	140,111	126,311	90,909	58,263	44,517
Battery Electric Vehicle (BEV)	654	1,281	1,677	3,826	5,433	6,757	9,242	15,972	33,366	30,194
Compressed natural gas CNG (monovalent/bivalent)	628	788	703	484	435	641	578	407	85	57
Plug-In Hybrid Electric Vehicle (PHEV)	184	434	1,101	1,237	1,721	1,888	2,156	7,641	14,626	12,038
Fuel Cell Electric Vehicle (FCEV)	0	3	9	5	0	7	19	14	14	14
New e-Vehicle Registrations M1 (BEV, PHEV, FCEV)	838	1,718	2,787	5,068	7,154	8,652	11,417	23,627	48,006	42,246
Electric Vehicle Share of New Registrations M1	0.26%	0.57%	0.90%	1.54%	2.02%	2.54%	3.47%	9.50%	20.02%	21.40%
Further Electric Vehicles of the Classes L, M, N	791	876	930	1,949	1,910	2,724	3,141	3,558	6,155	6,244
Motorbikes/Tricycles/Quadracycles (Class L)	585	672	651	1,478	1,667	2,251	2,617	2,805	3,765	4,236
Busses Class M2 and M3	15	1	12	22	6	17	22	14	11	26
Duty Vehicle Class N1 (< 3.5 ton)	191	203	267	449	237	446	500	739	2,341	1,926
Duty Vehicle Class N2, N3 (> 3.5 ton)	0	0	0	0	0	10	2	0	38	56

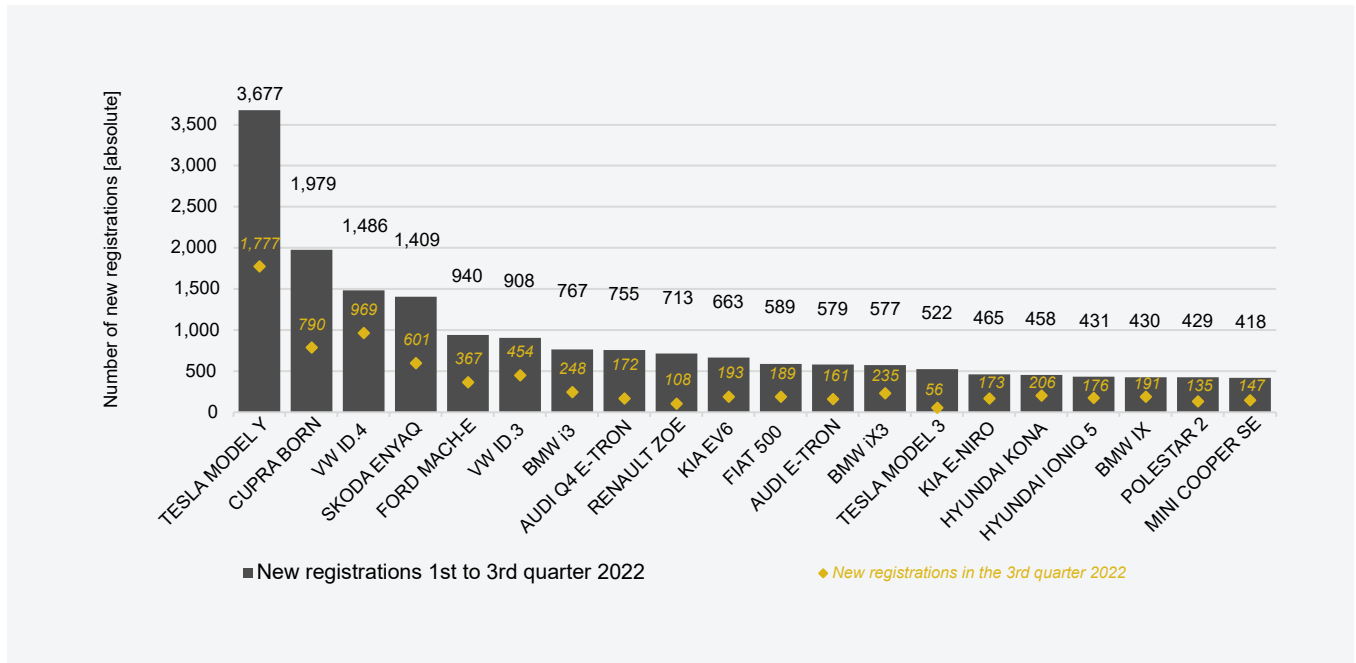
Source: Statistics Austria; Data status: 31.12. of the corresponding year respectively 30.11.2022; Illustration: AustriaTech

Vehicle population per year by vehicle type, fuel type and energy source

Vehicle types, fuel types or energy source	2013	2014	2015	2016	2017	2018	2019	2020	2021	2022 Nov
Passenger Vehicle Class M1	4,641,308	4,694,921	4,748,048	4,821,557	4,898,578	4,978,852	5,039,548	5,091,827	5,133,836	5,147,352
Petrol incl. Flex-Fuel	2,003,699	2,011,104	2,019,139	2,038,019	2,080,434	2,139,239	2,179,235	2,195,578	2,197,006	2,194,732
Diesel	2,621,133	2,663,063	2,702,922	2,749,046	2,770,470	2,776,332	2,772,854	2,762,273	2,717,475	2,655,097
Battery Electric Vehicle (BEV)	2,070	3,386	5,032	9,073	14,618	20,831	29,523	44,507	76,539	106,502
Compressed natural gas CNG (monovalent/bivalent)	3,651	4,262	4,775	5,031	5,206	5,542	5,746	5,731	5,455	5,211
Plug-In Hybrid Electric Vehicle (PHEV)	408	776	1,512	2,287	3,948	5,710	8,042	15,237	29,021	41,059
Fuel Cell Electric Vehicle (FCEV)	0	3	6	13	19	24	41	45	55	62
Electric Vehicle Population M1 (BEV, PHEV, FCEV)	2,478	4,165	6,550	11,373	18,585	26,565	37,606	59,789	105,615	147,623
Electric Vehicle – Change on Previous Year	78.40%	68.08%	57.26%	73.63%	63.41%	42.94%	41.56%	58.99%	76.65%	44.02%
Electric Vehicle Share in Population M1	0.05%	0.09%	0.14%	0.24%	0.38%	0.53%	0.75%	1.17%	2.06%	2.87%
Further Electric Vehicles of the Classes L, M, N	5,594	6,067	6,532	7,524	8,912	10,920	13,311	16,080	21,561	27,805
Motorbikes/Tricycles/Quadracycles (Class L)	4,835	5,116	5,324	5,907	7,057	8,614	10,533	12,565	15,716	19,952
Busses Class M2 and M3	139	131	138	149	143	154	161	172	174	200
Duty Vehicle Class N1 (< 3.5 ton)	619	819	1,069	1,467	1,711	2,141	2,605	3,330	5,627	7,553
Duty Vehicle Class N2, N3 (> 3.5 ton)	1	1	1	1	1	11	12	13	44	100

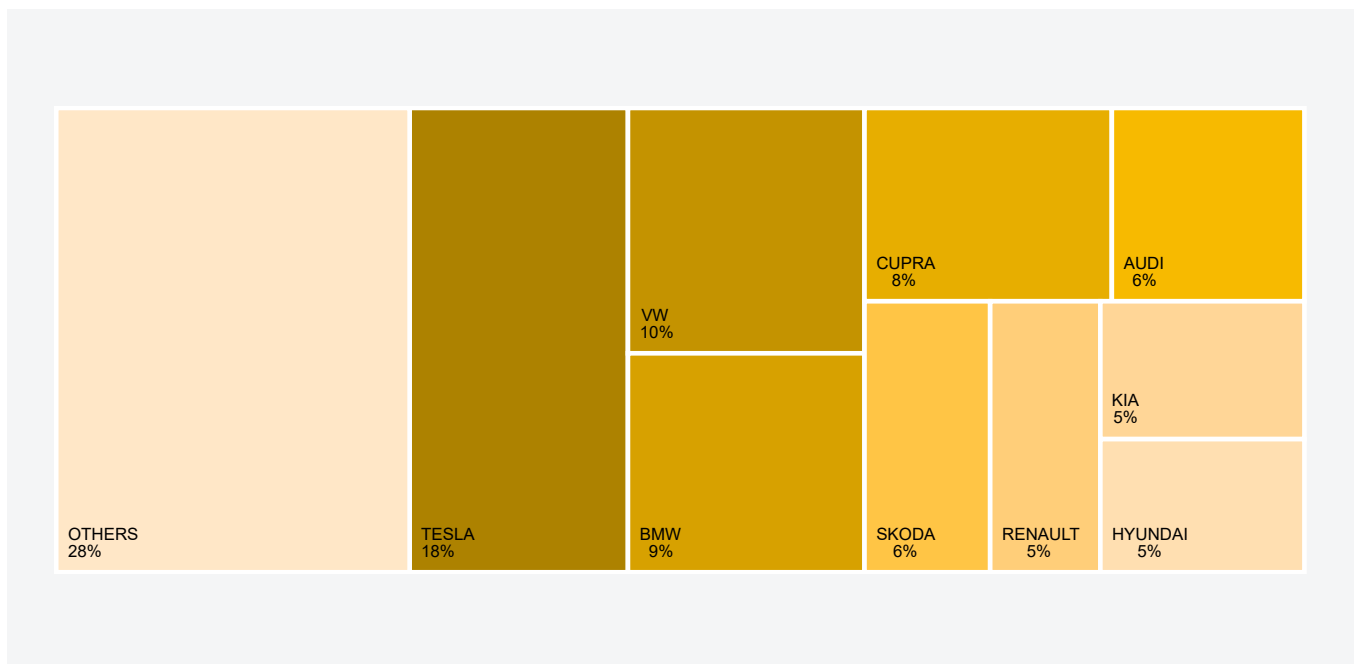
Source: Statistics Austria; Data status: 31.12. of the corresponding year respectively 30.11.2022; the PHEV population (M1) were calculated on the basis of the old PHEV population (31.12.2021) and the cumulated new registrations of PHEV of the current year; analogous to the determination of the PHEV population, the stocks of electric vehicles of the classes L, M2, M3 as well as N1, N2 & N3 of the current year were calculated.; Illustration: AustriaTech

Best selling electric passenger cars (BEV) M1 by model, 1st to 3rd quarter 2022



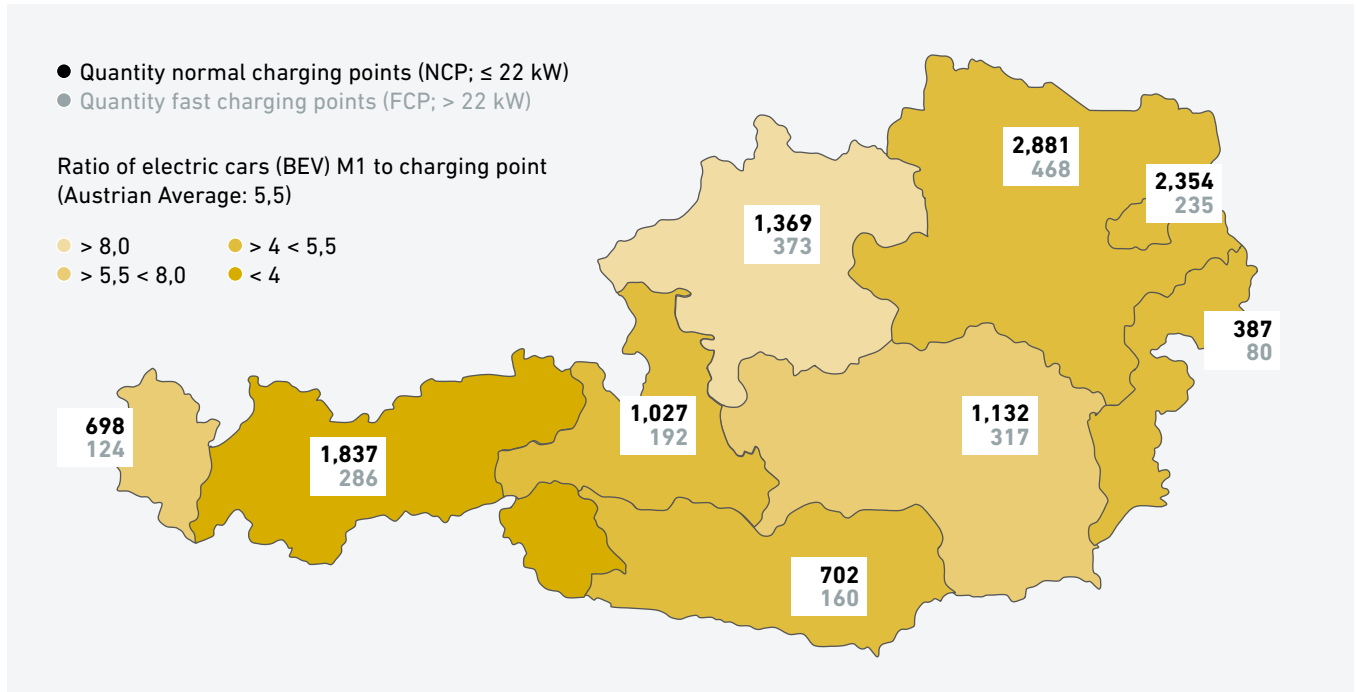
Source: Statistik Austria; Data status: 30.09.2022, Illustration: AustriaTech

Best selling electric passenger cars (BEV) M1 by brand, 1st to 3rd quarter 2022



Source: Statistik Austria; Data status: 30.09.2022, Illustration: AustriaTech

Publicly accessible charging points per federal state, 3rd quarter 2022

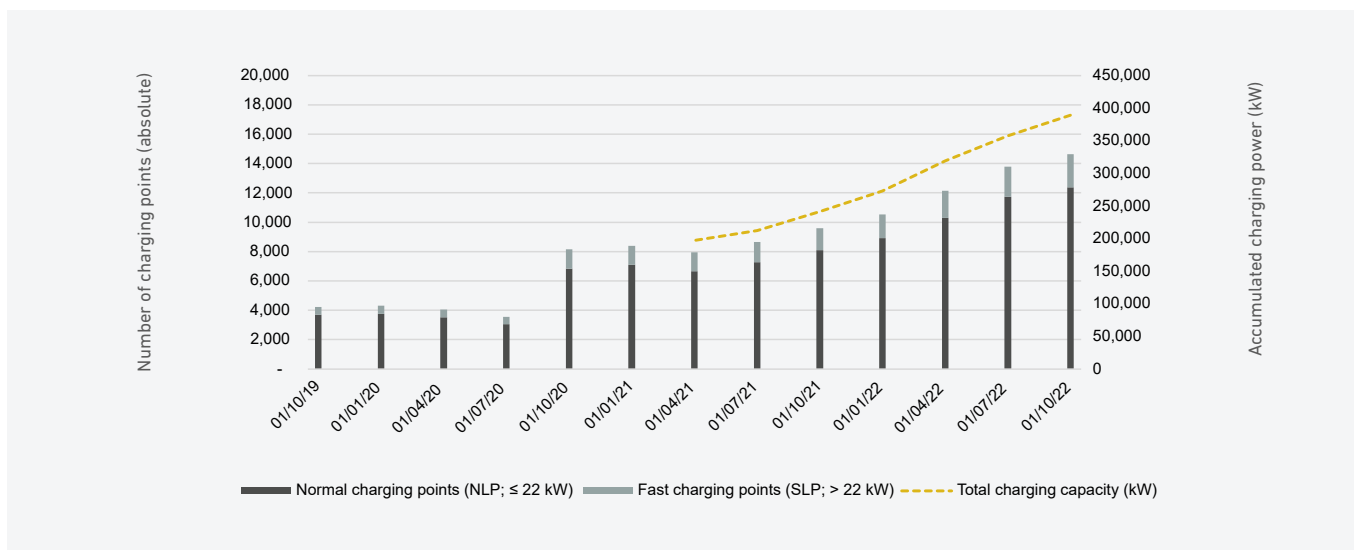


Source: Statistik Austria; Data status: 01.10.2022, Illustration: AustriaTech

Note: The figure shows publicly available normal and fast charging points according to Directive 2014/94/EU per federal state. As of 1st October 2022, there were a total of 12,387 normal charging points and 2,335 fast charging points throughout Austria.

“Österreichs Leitstelle für Elektromobilität” is the central hub and competence center for national electromobility agendas. It supports the extension of charging infrastructure in public spaces and particularly enforces fast charging points. These can supply more vehicles, which means that the ratio alone is not sufficient to assess the quality of supply in a region. Unlike public charging infrastructure, slow charging with up to 5.5 kW is sufficient in most cases for home charging.

Publicly accessible charging points and total charging capacity, 2019-2022



Source: Statistik Austria; Data status: end of the respective quarter, Illustration: AustriaTech

Imprint



About

The monthly publication “Electromobility in Austria Facts & Figures” is created by AustriaTech in its role as National Competence Center For Electromobility and offers a compact overview of recent developments in electromobility. “Österreichs Leitstelle für Elektromobilität” is the national competence center for Austria’s agendas in electromobility.

You can find the current issue of the publication series “Electromobility in Austria Facts & Figures” at www.austriatech.at/downloads as well as at www.austriatech.at/de/zahlen-daten-fakten-archiv

Contact: leitstelle-elektromobilitaet@austriatech.at resp. www.austriatech.at/de/leitstelle-elektromobilitaet

Media owner and publisher:

AustriaTech – Gesellschaft des Bundes für technologiepolitische Maßnahmen GmbH
Raimundgasse 1/6, 1020 Vienna, Austria
FN 92873d, Handelsgericht Wien
UID number: ATU39393704
Status: November 2022
Tel: +43 1 26 4333 444
office@austriatech.at, www.austriatech.at

Copyright Coverphoto: AustriaTech/Shutterstock

AustriaTech is 100% owned by the Federal Republic of Austria. The tasks of the subsidiary are recognized by the Federal Ministry of Climate Action, Environment, Energy, Mobility, Innovation and Technology (BMK). All publications by AustriaTech consider gender-sensitive language.

Glossary

BEV: Battery Electric Vehicle
FCEV: Fuel Cell Electric Vehicle
PHEV: Plug-In-Hybrid Electric Vehicle
BEV + PHEV + FCEV: E-Vehicles