

Electromobility in Austria

Facts & Figures | August 2022



2,639
E-vehicles (BEV, M1)
new registrations



262
E-vehicles (BEV, N1)
new registrations



10
E-vehicles (BEV, N2, N3,
M2, M3) new registrations



96,418
E-vehicles (BEV, M1)
Population

2030: 100% E-vehicles (BEV) in new registrations

15%
share of E-vehicles (BEV, M1) in new registrations



➤ Trend in August

In August 2,639 electric cars (BEV, M1) and 262 electric light commercial vehicles (BEV, N1) were newly registered in Austria. The number of E-vehicles (BEV) has increased to 96,418. In the comparison of federal states, Vorarlberg leads with a BEV share of new registrations of 20.81%.

➤ Overview and comments in August 2022

The developments in August continue to point the way towards the electrification of the transport sector. The National Competence Center For Electromobility monitors the facts and figures and compiles a monthly assessment of the most relevant developments.

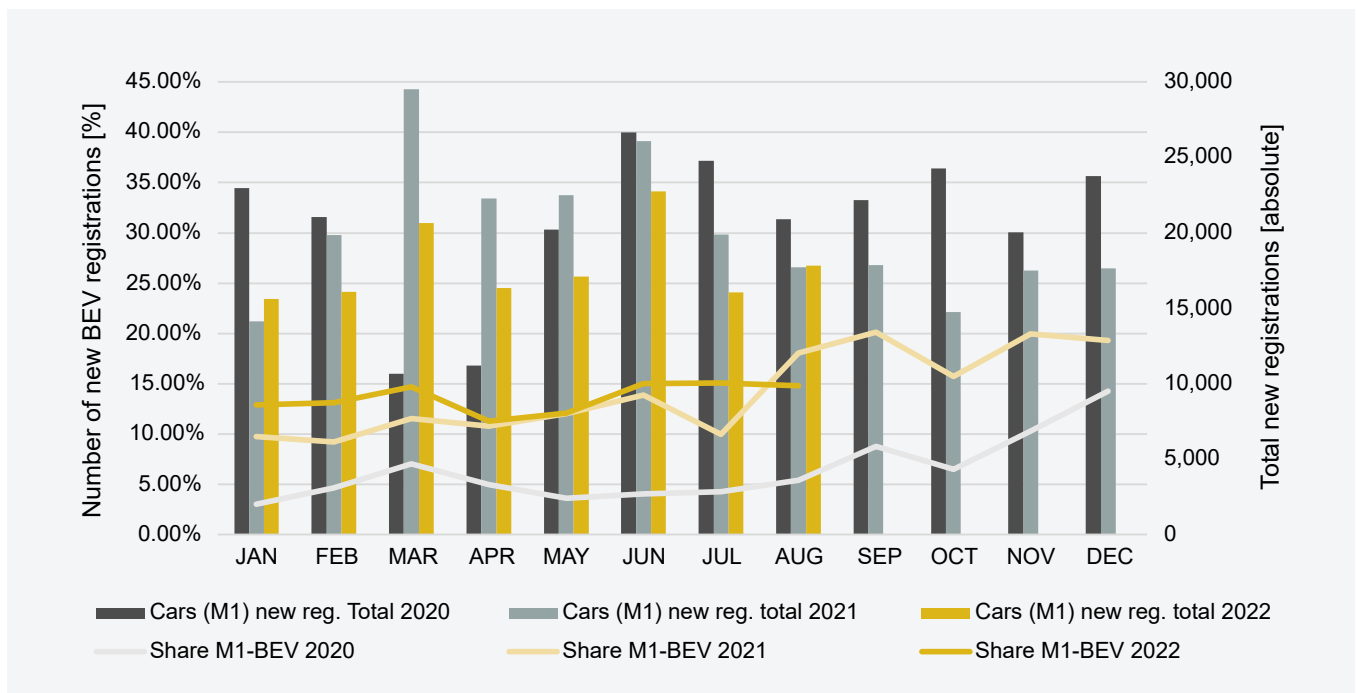
Alternative powertrains are advancing

More and more essential stakeholders in the transport sector are recognizing the potential of electromobility and taking appropriate action. The market research enterprise Dataforce analyses the planned phase-out of internal combustion engine

vehicles sales (ICE, M1): already today, the targets of most European-relevant manufacturers are in line with the EU target of 100% zero emission vehicles in new registrations from 2035. In the U.S. state of California, a similar regulation of 100% e-passenger cars in new registrations from 2035 was settled. Mirroring the progress in electromobility, the fleet of the Postbus AG in Lower Austrian Weinviertel switched to electric Busses (BEV) and now operates two regional zero-emission bus lines. This shows that electric drives already play a leading role today. As the national competence centre for e-mobility, we will actively support fleet conversions by networking stakeholders, coordinating the expansion of the charging infrastructure and developing new funding programs.

Source: Dataforce, California Air Resources Board, Verkehrsverbund Ost-Region

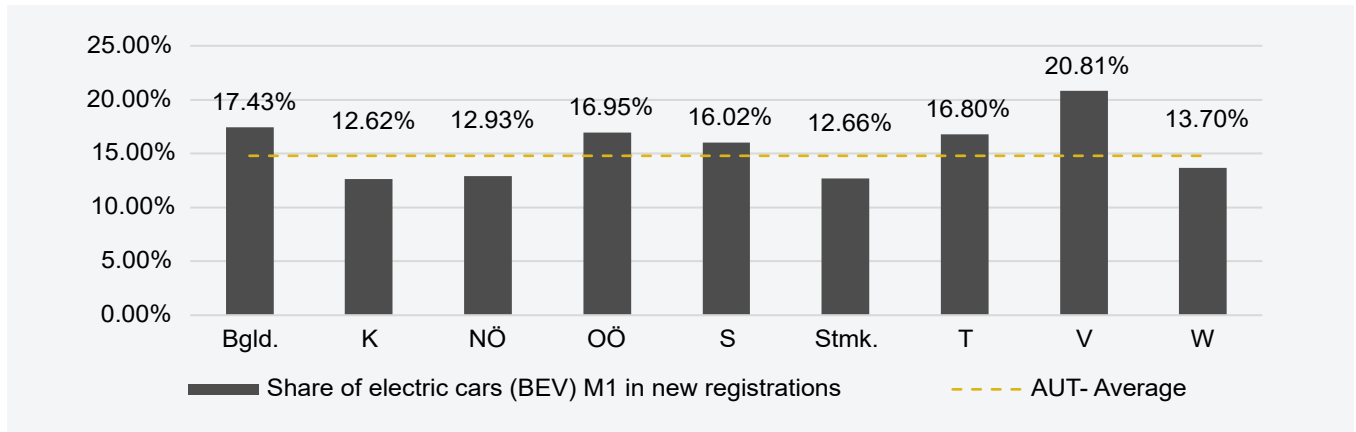
New registrations of e-vehicles per month: e-vehicles (BEV) M1, 2020-2021



Source: Statistics Austria; Data status: End of each month respectively 31.08.2022; Illustration: AustriaTech

New registrations in August 2022

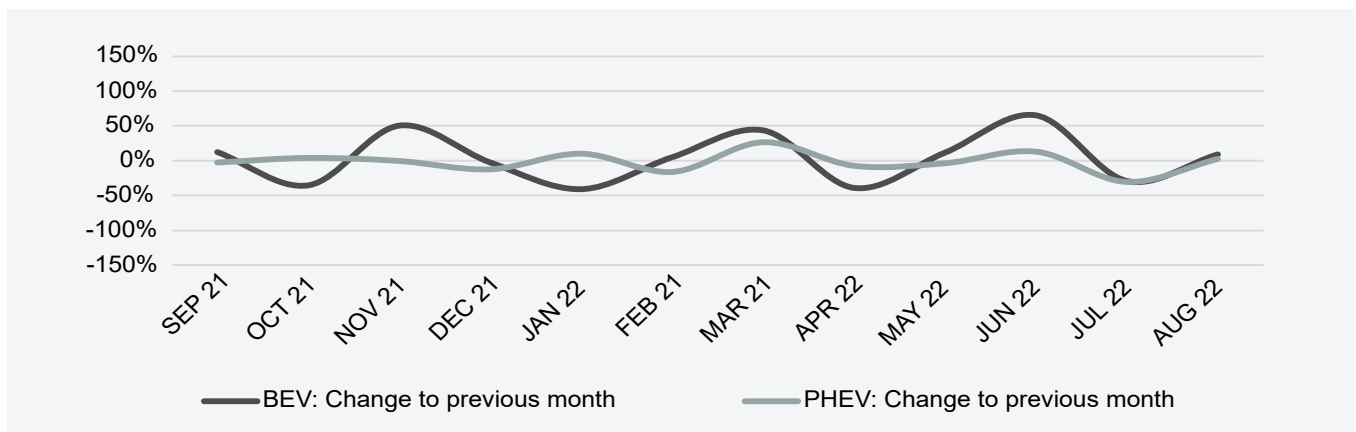
➤ Top 3 in e-vehicles (BEV) M1: V 21% Bgld. 17% OÖ 17%



Source: Statistik Austria; Data status: End of each month, Illustration: AustriaTech

Trend in new registrations, monthly comparison

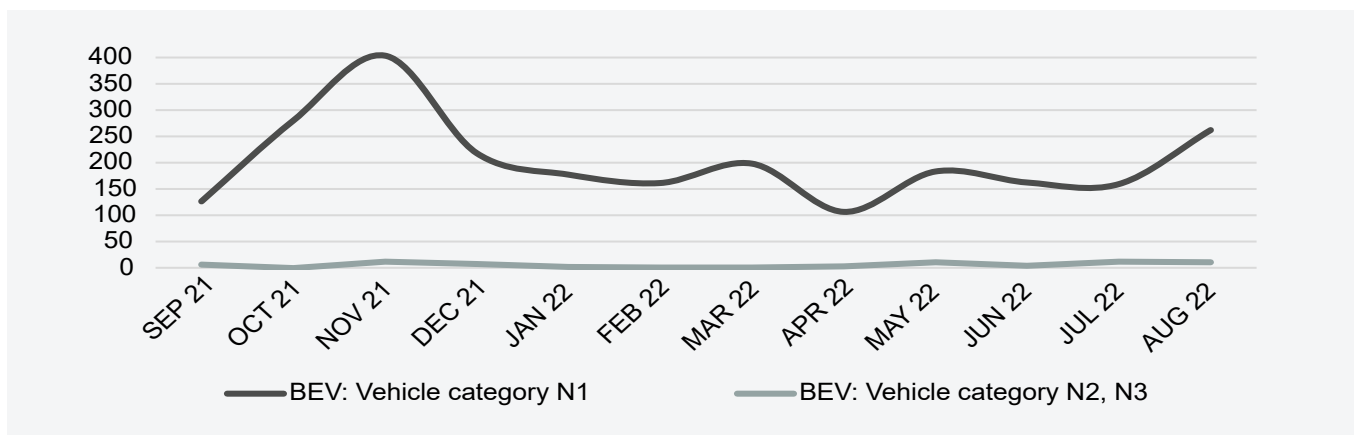
➤ BEV: +9% to previous month / PHEV: +3% to previous month



Source: Statistik Austria; Data status: End of each month, Illustration: AustriaTech

New registrations by categories of commercial vehicles

➤ E-LCV (BEV) N1: 262 / E-HGV (BEV) N2, N3: 10



Source: Statistik Austria; Data status: End of each month, Illustration: AustriaTech

New registrations per year by vehicle type, fuel type and energy source

| Vehicle types, fuel types or energy source | 2013 | 2014 | 2015 | 2016 | 2017 | 2018 | 2019 | 2020 | 2021 | 2022 Aug |
|---|---------|---------|---------|---------|---------|---------|---------|---------|---------|----------|
| Passenger Vehicle Class M1 | 319,035 | 303,318 | 308,555 | 329,604 | 353,320 | 341,068 | 329,363 | 248,740 | 239,803 | 142,474 |
| Petrol incl. Flex-Fuel | 134,276 | 126,503 | 122,832 | 131,756 | 163,701 | 184,150 | 176,706 | 107,771 | 91,478 | 55,173 |
| Diesel | 180,901 | 172,381 | 179,822 | 188,820 | 175,458 | 140,111 | 126,311 | 90,909 | 58,263 | 32,464 |
| Battery Electric Vehicle (BEV) | 654 | 1,281 | 1,677 | 3,826 | 5,433 | 6,757 | 9,242 | 15,972 | 33,366 | 19,550 |
| Compressed natural gas CNG (monovalent/bivalent) | 628 | 788 | 703 | 484 | 435 | 641 | 578 | 407 | 85 | 51 |
| Plug-In Hybrid Electric Vehicle (PHEV) | 184 | 434 | 1,101 | 1,237 | 1,721 | 1,888 | 2,156 | 7,641 | 14,626 | 8,225 |
| Fuel Cell Electric Vehicle (FCEV) | 0 | 3 | 9 | 5 | 0 | 7 | 19 | 14 | 14 | 14 |
| New e-Vehicle Registrations M1 (BEV, PHEV, FCEV) | 838 | 1,718 | 2,787 | 5,068 | 7,154 | 8,652 | 11,417 | 23,627 | 48,006 | 27,789 |
| Electric Vehicle Share of New Registrations M1 | 0.26% | 0.57% | 0.90% | 1.54% | 2.02% | 2.54% | 3.47% | 9.50% | 20.02% | 19.50% |
| Further Electric Vehicles of the Classes L, M, N | 791 | 876 | 930 | 1,949 | 1,910 | 2,724 | 3,141 | 3,558 | 6,155 | 4,950 |
| Motorbikes/Tricycles/Quadracycles (Class L) | 585 | 672 | 651 | 1,478 | 1,667 | 2,251 | 2,617 | 2,805 | 3,765 | 3,478 |
| Busses Class M2 and M3 | 15 | 1 | 12 | 22 | 6 | 17 | 22 | 14 | 11 | 20 |
| Duty Vehicle Class N1 (< 3.5 ton) | 191 | 203 | 267 | 449 | 237 | 446 | 500 | 739 | 2,341 | 1,408 |
| Duty Vehicle Class N2, N3 (> 3.5 ton) | 0 | 0 | 0 | 0 | 0 | 10 | 2 | 0 | 38 | 44 |

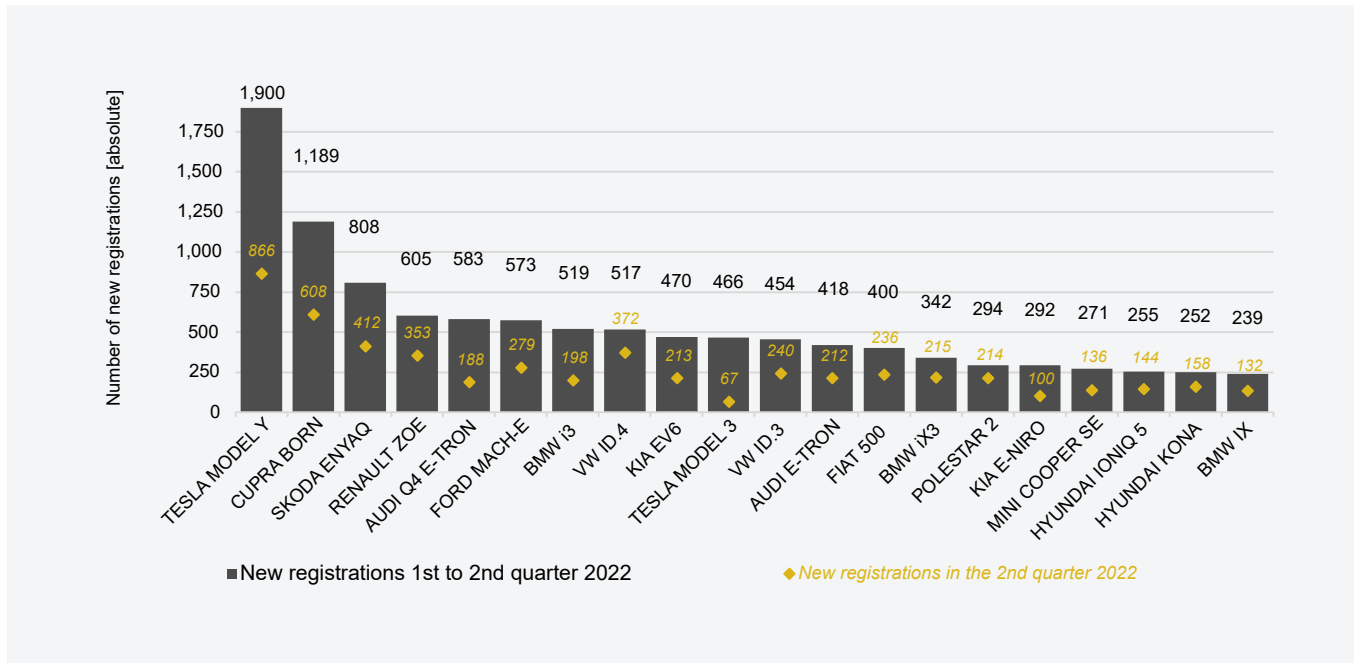
Source: Statistics Austria; Data status: 31.12. of the corresponding year respectively 31.08.2022; Illustration: AustriaTech

Vehicle population per year by vehicle type, fuel type and energy source

| Vehicle types, fuel types or energy source | 2013 | 2014 | 2015 | 2016 | 2017 | 2018 | 2019 | 2020 | 2021 | 2022 Aug |
|---|-----------|-----------|-----------|-----------|-----------|-----------|-----------|-----------|-----------|-----------|
| Passenger Vehicle Class M1 | 4,641,308 | 4,694,921 | 4,748,048 | 4,821,557 | 4,898,578 | 4,978,852 | 5,039,548 | 5,091,827 | 5,133,836 | 5,150,092 |
| Petrol incl. Flex-Fuel | 2,003,699 | 2,011,104 | 2,019,139 | 2,038,019 | 2,080,434 | 2,139,239 | 2,179,235 | 2,195,578 | 2,197,006 | 2,198,928 |
| Diesel | 2,621,133 | 2,663,063 | 2,702,922 | 2,749,046 | 2,770,470 | 2,776,332 | 2,772,854 | 2,762,273 | 2,717,475 | 2,676,608 |
| Battery Electric Vehicle (BEV) | 2,070 | 3,386 | 5,032 | 9,073 | 14,618 | 20,831 | 29,523 | 44,507 | 76,539 | 96,418 |
| Compressed natural gas CNG (monovalent/bivalent) | 3,651 | 4,262 | 4,775 | 5,031 | 5,206 | 5,542 | 5,746 | 5,731 | 5,455 | 5,303 |
| Plug-In Hybrid Electric Vehicle (PHEV) | 408 | 776 | 1,512 | 2,287 | 3,948 | 5,710 | 8,042 | 15,237 | 29,021 | 37,246 |
| Fuel Cell Electric Vehicle (FCEV) | 0 | 3 | 6 | 13 | 19 | 24 | 41 | 45 | 55 | 60 |
| Electric Vehicle Population M1 (BEV, PHEV, FCEV) | 2,478 | 4,165 | 6,550 | 11,373 | 18,585 | 26,565 | 37,606 | 59,789 | 105,615 | 133,724 |
| Electric Vehicle – Change on Previous Year | 78.40% | 68.08% | 57.26% | 73.63% | 63.41% | 42.94% | 41.56% | 58.99% | 76.65% | 48.67% |
| Electric Vehicle Share in Population M1 | 0.05% | 0.09% | 0.14% | 0.24% | 0.38% | 0.53% | 0.75% | 1.17% | 2.06% | 2.60% |
| Further Electric Vehicles of the Classes L, M, N | 5,594 | 6,067 | 6,532 | 7,524 | 8,912 | 10,920 | 13,311 | 16,080 | 21,561 | 26,511 |
| Motorbikes/Tricycles/Quadracycles (Class L) | 4,835 | 5,116 | 5,324 | 5,907 | 7,057 | 8,614 | 10,533 | 12,565 | 15,716 | 19,194 |
| Busses Class M2 and M3 | 139 | 131 | 138 | 149 | 143 | 154 | 161 | 172 | 174 | 194 |
| Duty Vehicle Class N1 (< 3.5 ton) | 619 | 819 | 1,069 | 1,467 | 1,711 | 2,141 | 2,605 | 3,330 | 5,627 | 7,035 |
| Duty Vehicle Class N2, N3 (> 3.5 ton) | 1 | 1 | 1 | 1 | 1 | 11 | 12 | 13 | 44 | 88 |

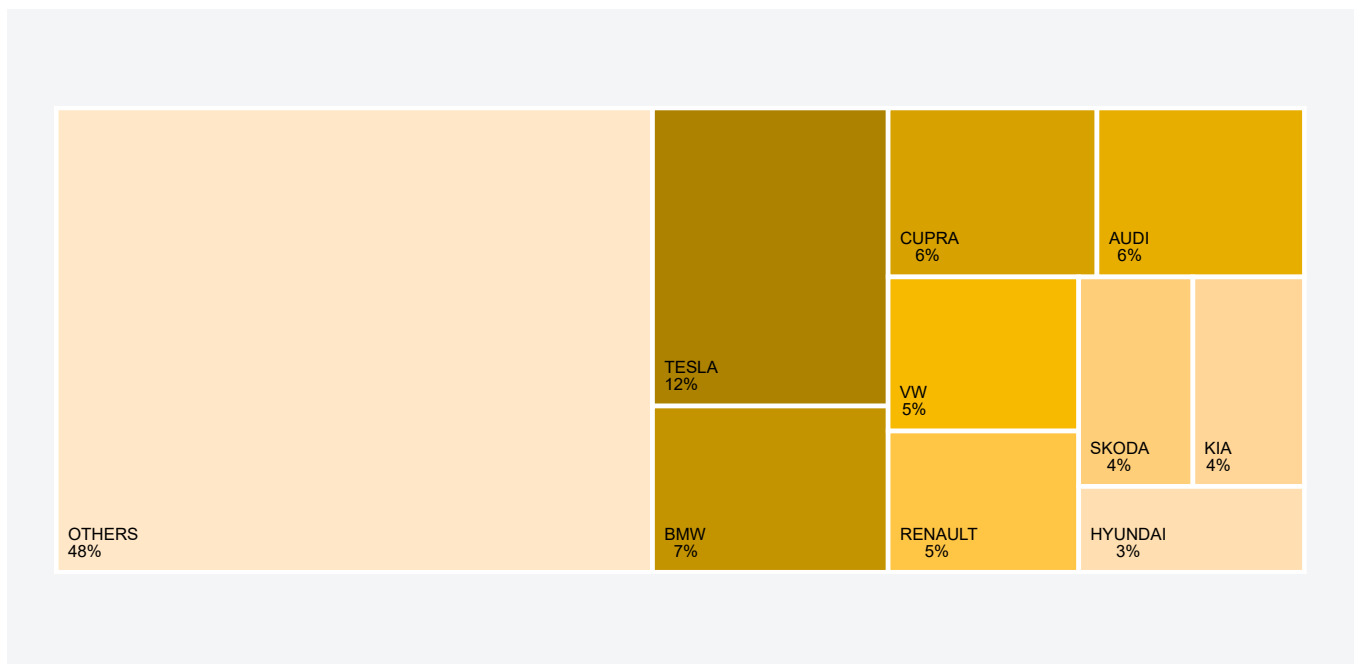
Source: Statistics Austria; Data status: 31.12. of the corresponding year respectively 31.08.2022; the PHEV population were calculated on the basis of the old PHEV population (31.12.2021) and the cumulated new registrations of PHEV of the current year; Illustration: AustriaTech

Best selling electric passenger cars (BEV) M1 by model, 1st to 2nd quarter 2022



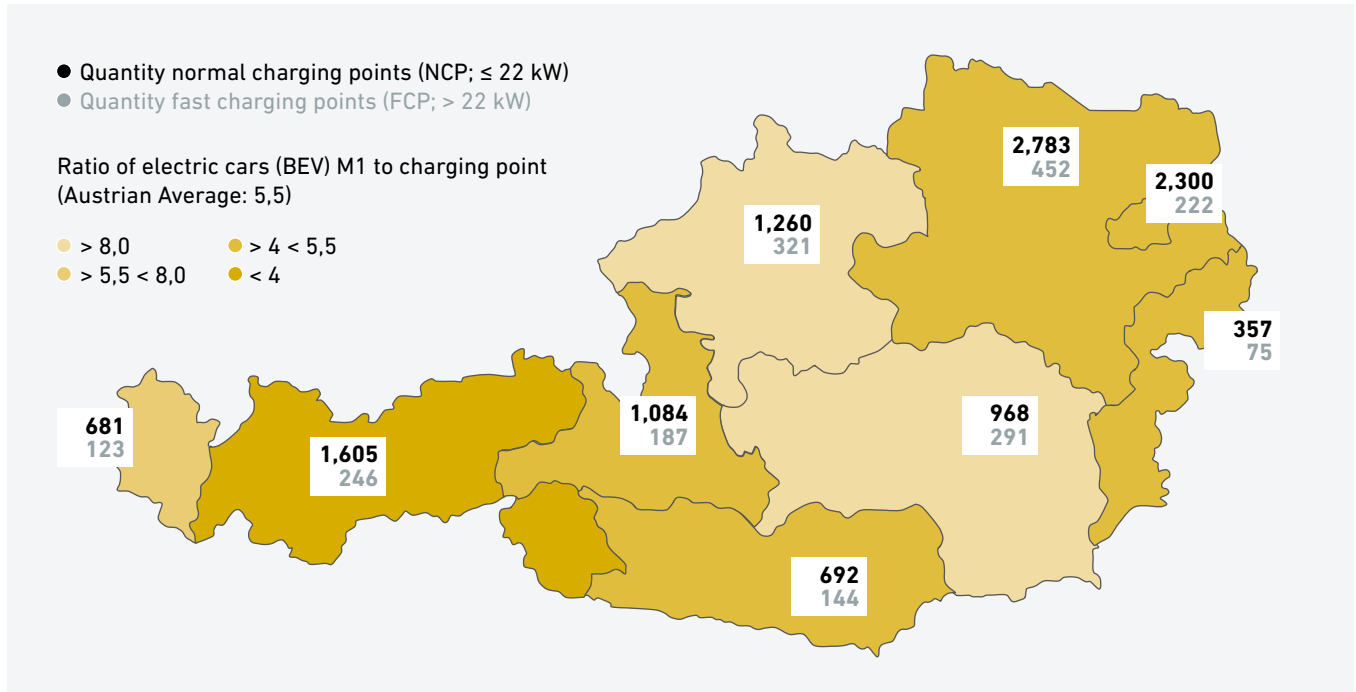
Source: Statistik Austria; Data status: end of each month, Illustration: AustriaTech

Best selling electric passenger cars (BEV) M1 by brand, 1st to 2nd quarter 2022



Source: Statistik Austria; Data status: end of each month, Illustration: AustriaTech

Publicly accessible charging points per federal state, 2nd quarter 2022

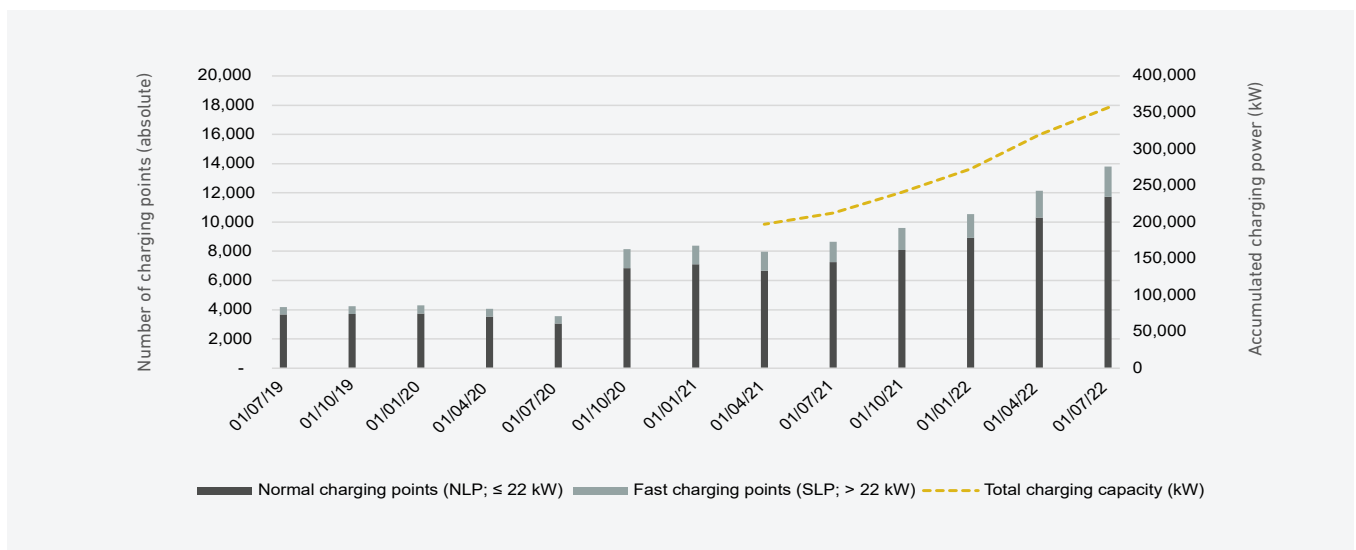


Source: Statistik Austria; Data status: 01.07.2022, Illustration: AustriaTech

Note: The figure shows publicly available normal and fast charging points according to Directive 2014/94/EU per federal state. As of 1st July 2022, there were a total of 11,730 normal charging points and 2,061 fast charging points throughout Austria.

“Österreichs Leitstelle für Elektromobilität” is the central hub and competence center for national electromobility agendas. It supports the extension of charging infrastructure in public spaces and particularly enforces fast charging points. These can supply more vehicles, which means that the ratio alone is not sufficient to assess the quality of supply in a region. Unlike public charging infrastructure, slow charging with up to 5.5 kW is sufficient in most cases for home charging.

Publicly accessible charging points and total charging capacity, 2019-2022



Source: Statistik Austria; Data status: end of the respective quarter, Illustration: AustriaTech

Imprint



About

The monthly publication “Electromobility in Austria Facts & Figures” is created by AustriaTech in its role as Österreichs Leitstelle für Elektromobilität and offers a compact overview of recent developments in electromobility. Österreichs Leitstelle für Elektromobilität is the national competence center for Austria’s agendas in e-mobility.

You can find the current issue of the publication series “Electromobility in Austria Facts & Figures” at www.austriatech.at/downloads as well as at www.austriatech.at/de/zahlen-daten-fakten-archiv

Contact: leitstelle-elektromobilitaet@austriatech.at

Media owner and publisher:

AustriaTech – Gesellschaft des Bundes für technologiepolitische Maßnahmen GmbH
Raimundgasse 1/6, 1020 Vienna, Austria
FN 92873d, Handelsgericht Wien
UID number: ATU39393704
Status: August 2022
Tel: +43 1 26 4333 444
office@austriatech.at, www.austriatech.at

Copyright Coverphoto: AustriaTech/Shutterstock

AustriaTech is 100% owned by the Federal Republic of Austria. The tasks of the subsidiary are recognized by the Federal Ministry of Climate Action, Environment, Energy, Mobility, Innovation and Technology (BMK). All publications by AustriaTech consider gender-sensitive language.

Glossary

BEV: Battery Electric Vehicle
FCEV: Fuel Cell Electric Vehicle
PHEV: Plug-In-Hybrid Electric Vehicle
BEV + PHEV + FCEV: E-Vehicles