

Electromobility in Austria

Facts & Figures | December 2022



3,971
E-vehicles (BEV, M1)
new registrations



141
E-vehicles (BEV, N1)
new registrations



1
E-vehicles (BEV, N2, N3,
M2, M3) new registrations



110,225
E-vehicles (BEV, M1)
Population

2030: 100% E-vehicles (BEV) in new registrations

23%
share of E-vehicles (BEV, M1) in new registrations



➤ Trend in December

In December 3,971 electric cars (BEV, M1) and 141 electric light commercial vehicles (BEV, N1) were newly registered in Austria. The number of E-vehicles (BEV) has increased to 110,225. In the comparison of federal states, Salzburg leads with a BEV share of new registrations of 29.79%.

➤ Overview and comments in December 2022

2022 has shown: The development towards the electrification of the transport sector is progressing. OLÉ – The National Competence Center For Electromobility monitors the relevant facts and figures and takes a look back at the most important milestones.

Milestones in absolute and relative terms

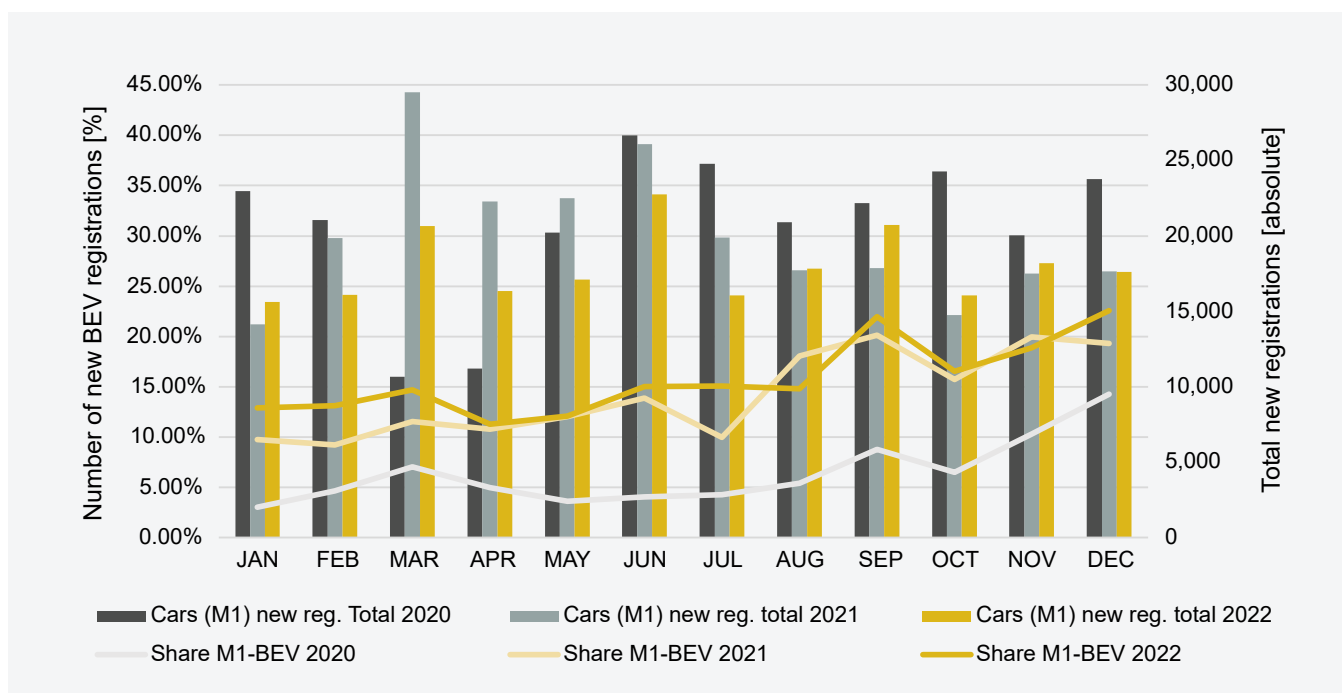
Since autumn, the time has come: The stock of battery-electric passenger cars (class M1, BEV) in Austria has reached milestones both in absolute numbers with 100,000 units and as a share of the total stock with 2%. In total, there are already

more than 150,000 plug-in e-cars (BEV+PHEV) in Austria. The shares of total new passenger car registrations are even more significant. At the end of the year in December, BEVs accounted for 22.56%. The annual average for 2022 is 15.89% BEV cars and more than 22% plug-in e-cars (BEV+PHEV). Vorarlberg stands out with a BEV car share of more than 20%. Moreover, electric mobility has also definitely arrived among other vehicle categories (see page 4).

How to charge all these electric cars? There are already more than 15,000 publicly accessible charging points available throughout Austria. The roll-out of the public charging infrastructure and information on the distribution by federal provinces can be found on page 6 of this publication.

Source: Statistik Austria, E-Control

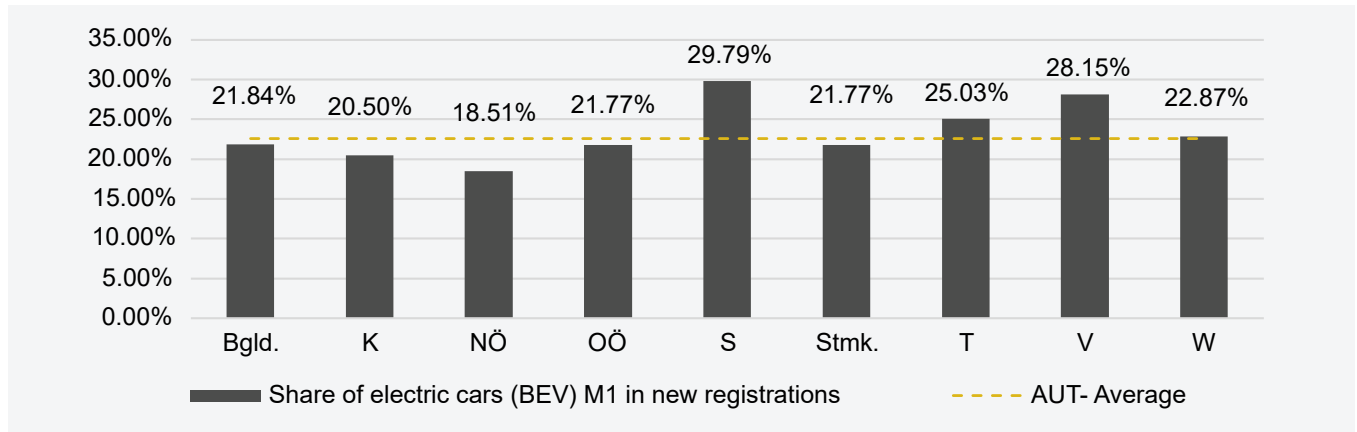
New registrations of e-vehicles per month: e-vehicles (BEV) M1, 2020-2021



Source: Statistics Austria; Data status: End of each month respectively 31.12.2022; Illustration: AustriaTech

New registrations in December 2022

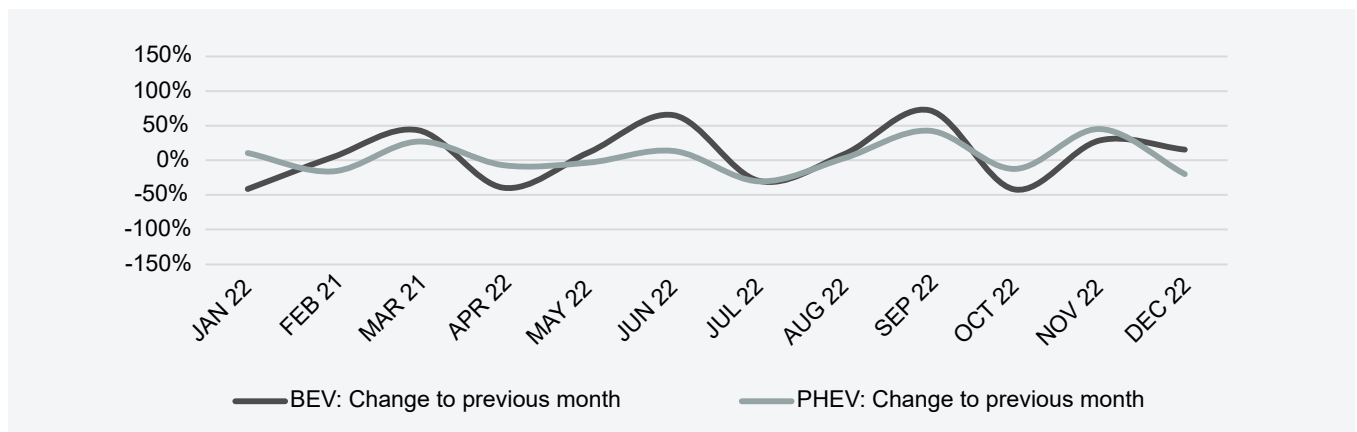
➤ Top 3 in e-vehicles (BEV) M1: S 30% V 28% T 25%



Source: Statistik Austria; Data status: End of each month, Illustration: AustriaTech

Trend in new registrations, monthly comparison

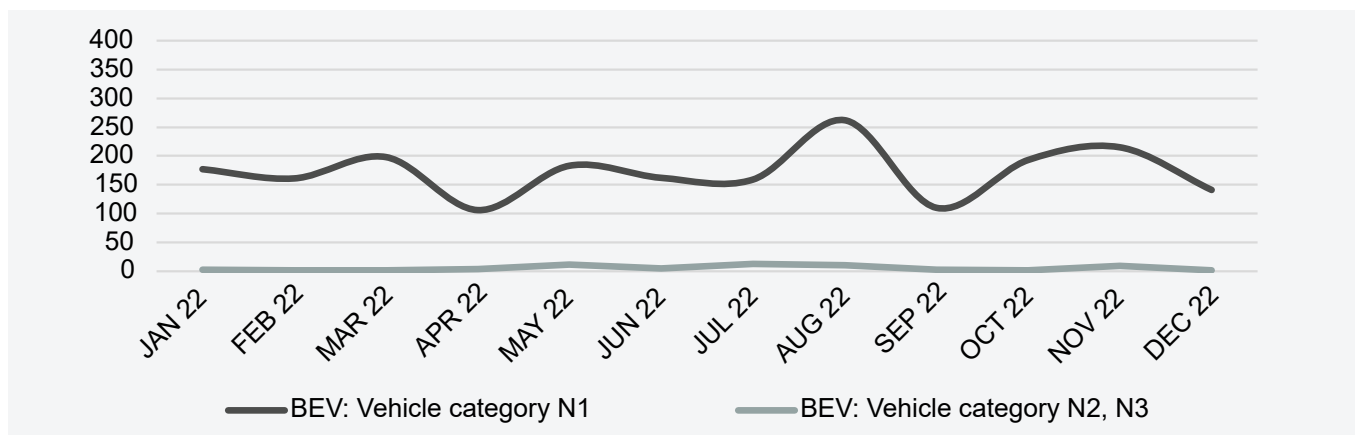
➤ BEV: +16% to previous month / PHEV: -20% to PM



Source: Statistik Austria; Data status: End of each month, Illustration: AustriaTech

New registrations by categories of commercial vehicles

➤ E-LCV (BEV) N1: 141 / E-HGV (BEV) N2, N3: 1



Source: Statistik Austria; Data status: End of each month, Illustration: AustriaTech

New registrations per year by vehicle type, fuel type and energy source

Vehicle types, fuel types or energy source	2013	2014	2015	2016	2017	2018	2019	2020	2021	2022 Dec
Passenger Vehicle Class M1	319,035	303,318	308,555	329,604	353,320	341,068	329,363	248,740	239,803	215,050
Petrol incl. Flex-Fuel	134,276	126,503	122,832	131,756	163,701	184,150	176,706	107,771	91,478	78,567
Diesel	180,901	172,381	179,822	188,820	175,458	140,111	126,311	90,909	58,263	48,115
Battery Electric Vehicle (BEV)	654	1,281	1,677	3,826	5,433	6,757	9,242	15,972	33,366	34,165
Compressed natural gas CNG (monovalent/bivalent)	628	788	703	484	435	641	578	407	85	59
Plug-In Hybrid Electric Vehicle (PHEV)	184	434	1,101	1,237	1,721	1,888	2,156	7,641	14,626	13,268
Fuel Cell Electric Vehicle (FCEV)	0	3	9	5	0	7	19	14	14	14
New e-Vehicle Registrations M1 (BEV, PHEV, FCEV)	838	1,718	2,787	5,068	7,154	8,652	11,417	23,627	48,006	47,447
Electric Vehicle Share of New Registrations M1	0.26%	0.57%	0.90%	1.54%	2.02%	2.54%	3.47%	9.50%	20.02%	22.06%
Further Electric Vehicles of the Classes L, M, N	791	876	930	1,949	1,910	2,724	3,141	3,558	6,155	6,485
Motorbikes/Tricycles/Quadracycles (Class L)	585	672	651	1,478	1,667	2,251	2,617	2,805	3,765	4,335
Busses Class M2 and M3	15	1	12	22	6	17	22	14	11	26
Duty Vehicle Class N1 (< 3.5 ton)	191	203	267	449	237	446	500	739	2,341	2,067
Duty Vehicle Class N2, N3 (> 3.5 ton)	0	0	0	0	0	10	2	0	38	57

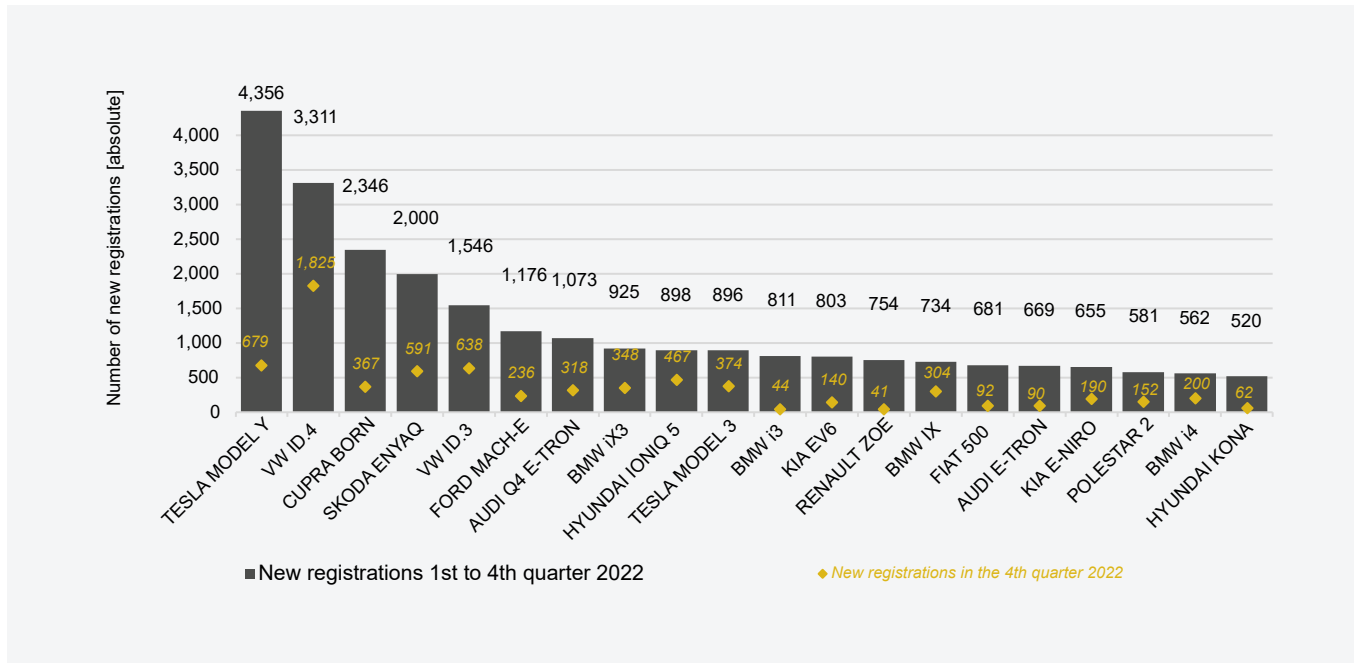
Source: Statistics Austria; Data status: 31.12. of the corresponding year respectively 31.12.2022; Illustration: AustriaTech

Vehicle population per year by vehicle type, fuel type and energy source

Vehicle types, fuel types or energy source	2013	2014	2015	2016	2017	2018	2019	2020	2021	2022 Dec
Passenger Vehicle Class M1	4,641,308	4,694,921	4,748,048	4,821,557	4,898,578	4,978,852	5,039,548	5,091,827	5,133,836	5,150,890
Petrol incl. Flex-Fuel	2,003,699	2,011,104	2,019,139	2,038,019	2,080,434	2,139,239	2,179,235	2,195,578	2,197,006	2,194,125
Diesel	2,621,133	2,663,063	2,702,922	2,749,046	2,770,470	2,776,332	2,772,854	2,762,273	2,717,475	2,651,280
Battery Electric Vehicle (BEV)	2,070	3,386	5,032	9,073	14,618	20,831	29,523	44,507	76,539	110,225
Compressed natural gas CNG (monovalent/bivalent)	3,651	4,262	4,775	5,031	5,206	5,542	5,746	5,731	5,455	5,180
Plug-In Hybrid Electric Vehicle (PHEV)	408	776	1,512	2,287	3,948	5,710	8,042	15,237	29,021	42,289
Fuel Cell Electric Vehicle (FCEV)	0	3	6	13	19	24	41	45	55	62
Electric Vehicle Population M1 (BEV, PHEV, FCEV)	2,478	4,165	6,550	11,373	18,585	26,565	37,606	59,789	105,615	152,576
Electric Vehicle – Change on Previous Year	78.40%	68.08%	57.26%	73.63%	63.41%	42.94%	41.56%	58.99%	76.65%	43.32%
Electric Vehicle Share in Population M1	0.05%	0.09%	0.14%	0.24%	0.38%	0.53%	0.75%	1.17%	2.06%	2.96%
Further Electric Vehicles of the Classes L, M, N	5,594	6,067	6,532	7,524	8,912	10,920	13,311	16,080	21,561	28,046
Motorbikes/Tricycles/Quadracycles (Class L)	4,835	5,116	5,324	5,907	7,057	8,614	10,533	12,565	15,716	20,051
Busses Class M2 and M3	139	131	138	149	143	154	161	172	174	200
Duty Vehicle Class N1 (< 3.5 ton)	619	819	1,069	1,467	1,711	2,141	2,605	3,330	5,627	7,694
Duty Vehicle Class N2, N3 (> 3.5 ton)	1	1	1	1	1	11	12	13	44	101

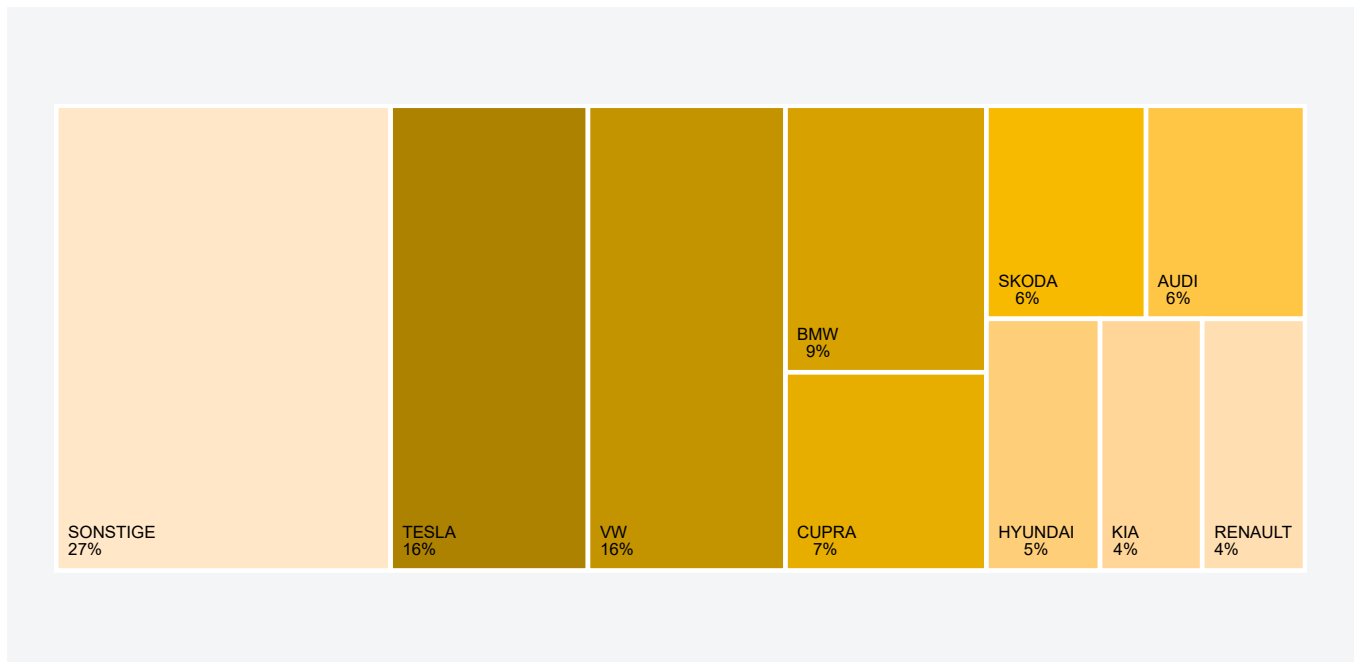
Source: Statistics Austria; Data status: 31.12. of the corresponding year respectively 31.12.2022; the PHEV population (M1) were calculated on the basis of the old PHEV population (31.12.2021) and the cumulated new registrations of PHEV of the current year; analogous to the determination of the PHEV population, the stocks of electric vehicles of the classes L, M2, M3 as well as N1, N2 & N3 of the current year were calculated.; Illustration: AustriaTech

Best selling electric passenger cars (BEV) M1 by model, 1st to 4th quarter 2022



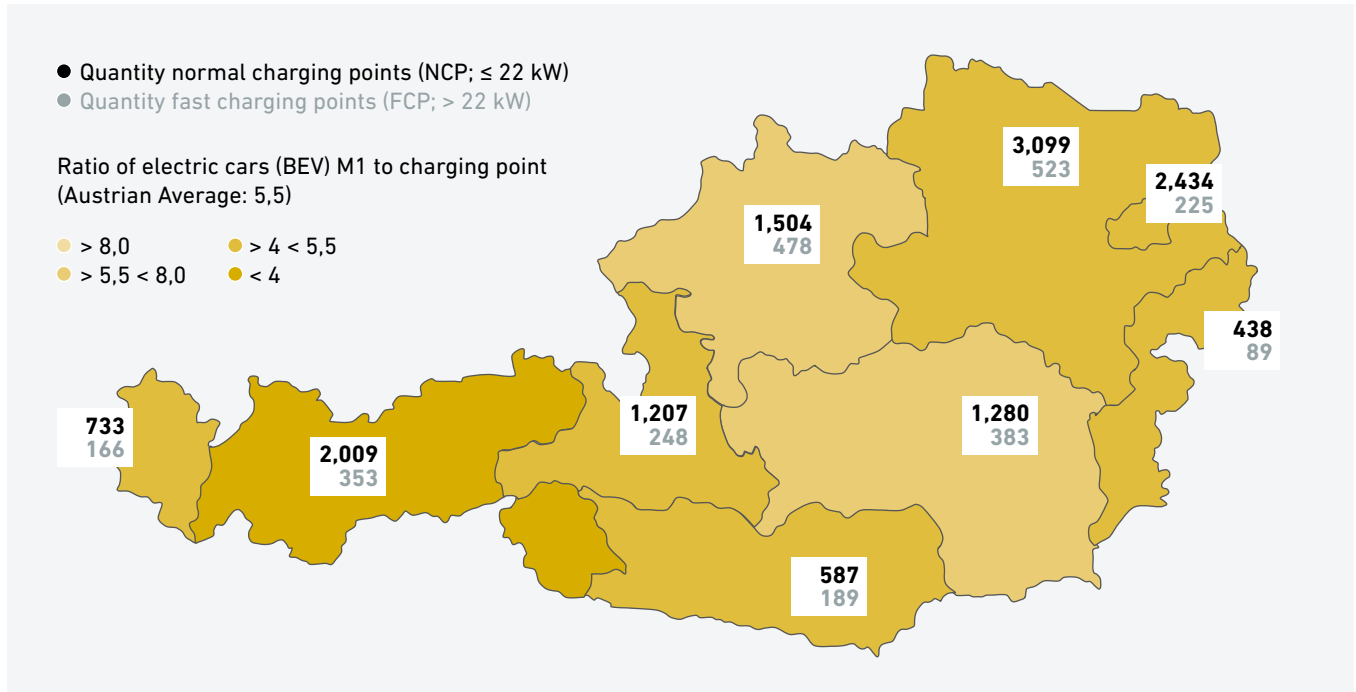
Source: Statistik Austria; Data status: 31.12.2022, Illustration: AustriaTech

Best selling electric passenger cars (BEV) M1 by brand, 1st to 4th quarter 2022



Source: Statistik Austria; Data status: 31.12.2022, Illustration: AustriaTech

Publicly accessible charging points per federal state, 4th quarter 2022

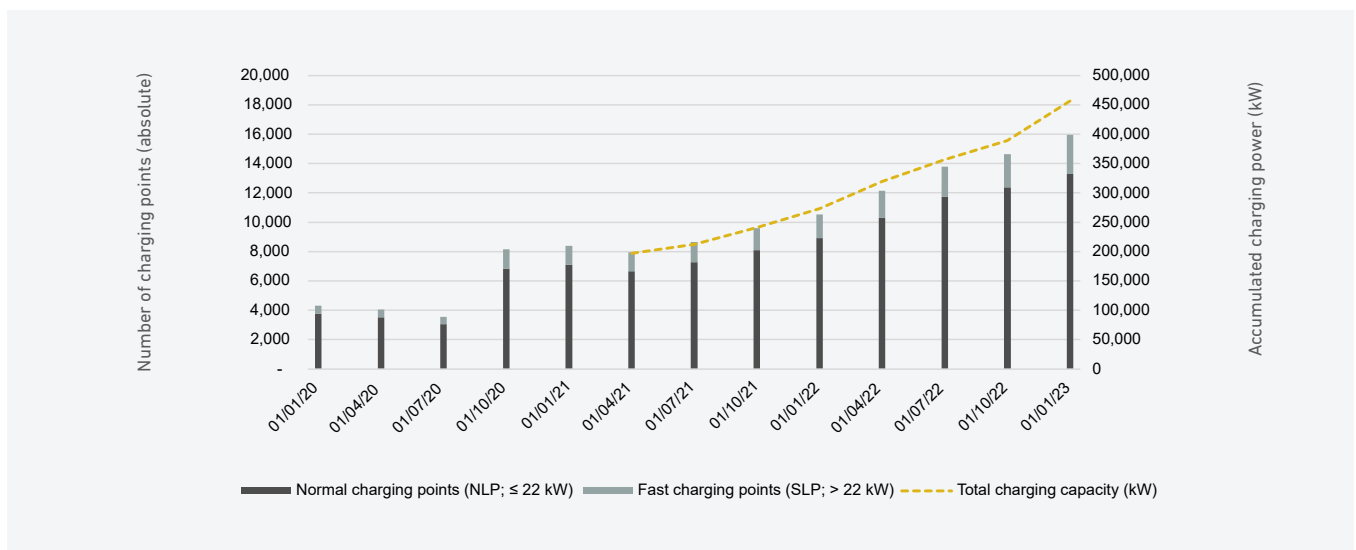


Source: E-Control; Data status: 01.01.2023, Illustration: AustriaTech

Note: The figure shows publicly available normal and fast charging points according to Directive 2014/94/EU per federal state. As of 1st January 2023, there were a total of 13,291 normal charging points and 2,654 fast charging points throughout Austria.

“Österreichs Leitstelle für Elektromobilität” is the central hub and competence center for national electromobility agendas. It supports the extension of charging infrastructure in public spaces and particularly enforces fast charging points. These can supply more vehicles, which means that the ratio alone is not sufficient to assess the quality of supply in a region. Unlike public charging infrastructure, slow charging with up to 5.5 kW is sufficient in most cases for home charging.

Publicly accessible charging points and total charging capacity, 2019-2022



Source: E-Control; Data status: end of the respective quarter, Illustration: AustriaTech

Imprint



About

The monthly publication “Electromobility in Austria Facts & Figures” is created by AustriaTech in its role as National Competence Center For Electromobility and offers a compact overview of recent developments in electromobility. “Österreichs Leitstelle für Elektromobilität” is the national competence center for Austria’s agendas in electromobility.

You can find the current issue of the publication series “Electromobility in Austria Facts & Figures” at www.austriatech.at/downloads as well as at www.austriatech.at/de/zahlen-daten-fakten-archiv

Contact: leitstelle-elektromobilitaet@austriatech.at resp. www.austriatech.at/de/leitstelle-elektromobilitaet

Media owner and publisher:

AustriaTech – Gesellschaft des Bundes für technologiepolitische Maßnahmen GmbH
Raimundgasse 1/6, 1020 Vienna, Austria
FN 92873d, Handelsgericht Wien
UID number: ATU39393704
Status: December 2022
Tel: +43 1 26 4333 444
office@austriatech.at, www.austriatech.at

Copyright Coverphoto: AustriaTech/Shutterstock

AustriaTech is 100% owned by the Federal Republic of Austria. The tasks of the subsidiary are recognized by the Federal Ministry of Climate Action, Environment, Energy, Mobility, Innovation and Technology (BMK). All publications by AustriaTech consider gender-sensitive language.

Glossary

BEV: Battery Electric Vehicle
FCEV: Fuel Cell Electric Vehicle
PHEV: Plug-In-Hybrid Electric Vehicle
BEV + PHEV + FCEV: E-Vehicles