

E-Mobility in Austria

Facts & Figures | March 2024



4,657
BEV cars (M1)
new registrations



137
BEV-LCV (N1)
new registrations



0
BEV-HGV (N2 + N3)
new registrations



0
BEV buses (M2 + M3)
new registrations

2030: 100% in new registrations

18 % BEV share of cars (M1) in new registrations
in March 2024



166,019
BEV cars (M1)
in operation



22,442
recharging points
in operation

What does BEV mean ?

BEV is short for „Battery electric vehicle“. Such a vehicle is driven by an electric motor and draws the required energy from an accumulator.

➤ Overview and comments in March 2024

March entailed a few of milestones and exciting developments for electromobility. OLÉ – Austria’s National Competence Center for E-Mobility continuously monitors figures and data and provides a monthly assessment.

Recharging infrastructure for e-trucks

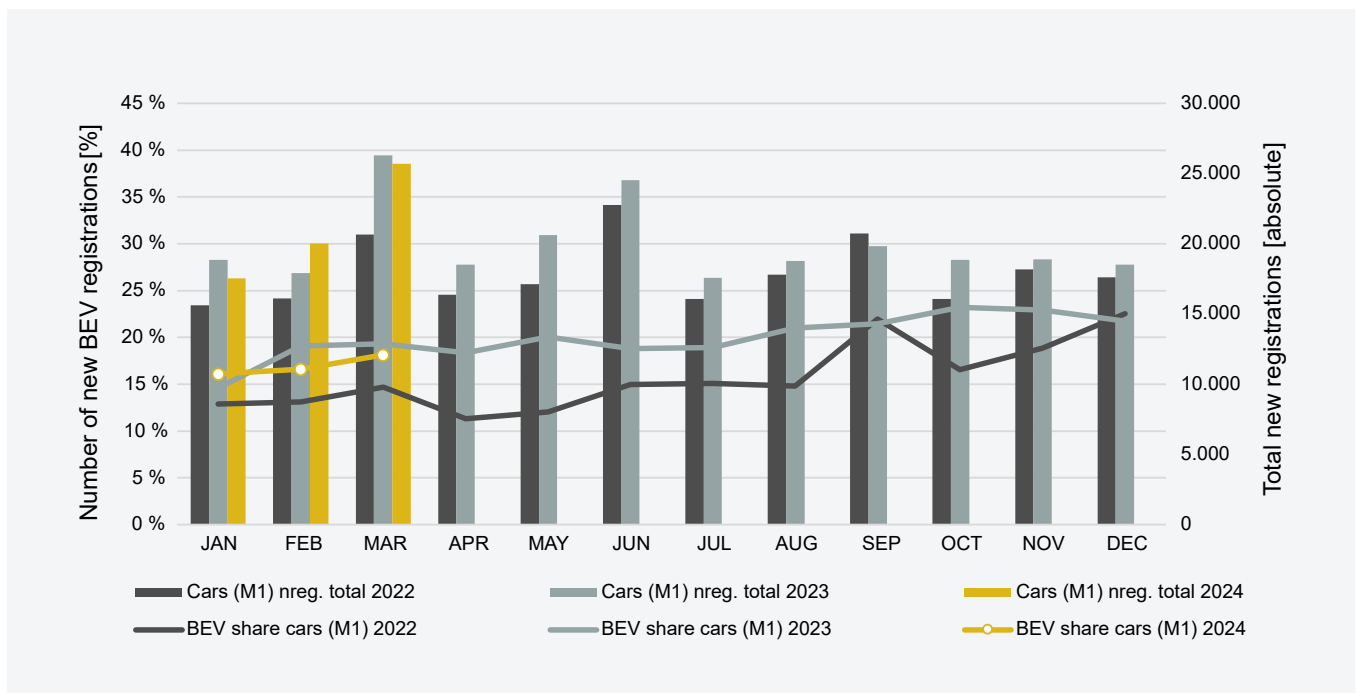
In March, OLÉ – Austria’s National Competence Center for E-Mobility published the “Highlights 2023 – Facts & Figures on e-mobility Austria”. Unrivalled in Austria, the publication provides detailed insights into developments in electric mobility

and focuses on the charging infrastructure and the number of electric vehicles. The annual review is provided for download in German and English. The print version is available via the contact addresses of Austria’s National Competence Center for E-Mobility.

In the European context, another important step towards the decarbonisation of road transport was taken in March. The EU Parliament voted in favour of raising the CO2 fleet targets for heavy duty vehicles. The proposed legislation stipulates that the average CO2 emissions of heavy commercial vehicles will be reduced by 45 percent by 2030 and by 90 percent by 2040. Before the draft comes into force next year, it has to be formally confirmed by the Council of Ministers.

Source & Data status: AustriaTech [03/2024]; Electrive.net [11/04/2024]

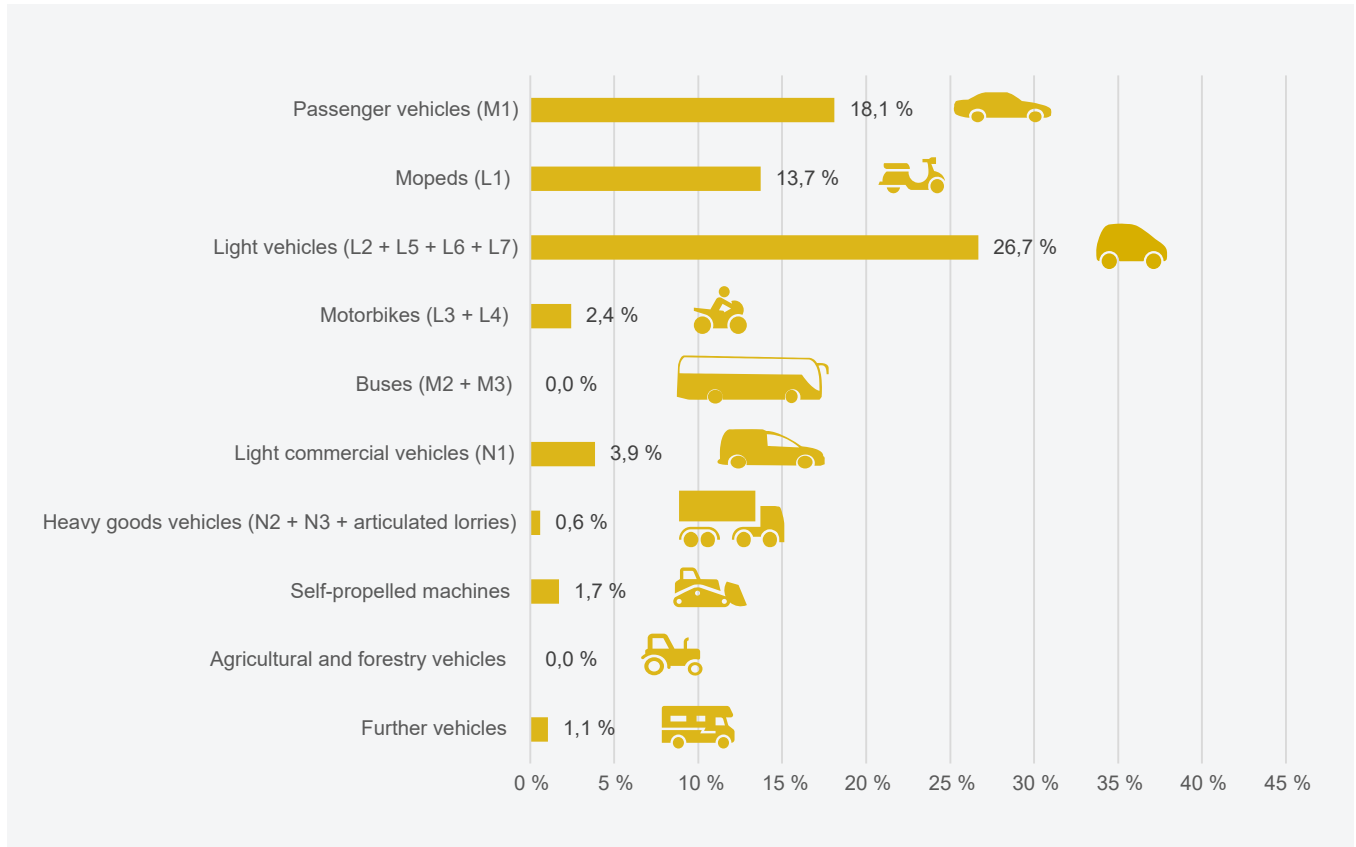
New registrations per month: BEV cars (M1), 2022-2024



Source: Statistics Austria; Illustration: AustriaTech; Data status: End of each month respectively 31/03/2024

Share of new registrations of BEV in selected vehicle classes

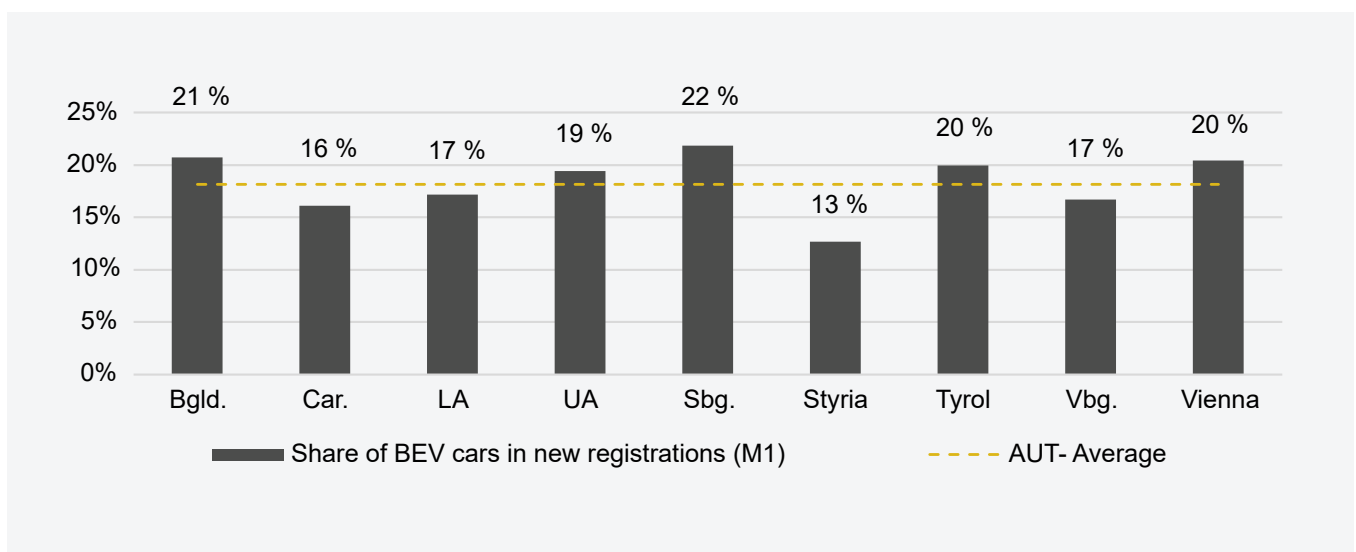
➤ BEV-LV (L2 + L5 + L6 + L7): 44



Source: Statistik Austria; Illustration: AustriaTech; Data status: 31/03/2024

New registrations of BEV cars (M1) by federal state

➤ Top 3 in BEV cars (M1): Sbg. 22 % Bgld. 21 % Vienna 20 %



Source: Statistik Austria; Illustration: AustriaTech; Data status: 31/03/2024

New vehicle registrations per year by vehicle type, fuel type or power source

| Vehicle types, fuel types or energy source | 2015 | 2016 | 2017 | 2018 | 2019 | 2020 | 2021 | 2022 | 2023 | 2024 Mar |
|---|----------------|----------------|----------------|----------------|----------------|----------------|----------------|----------------|----------------|---------------|
| Passenger vehicle class M1 | 308,555 | 329,604 | 353,320 | 341,068 | 329,363 | 248,740 | 239,803 | 215,050 | 239,150 | 63,263 |
| Petrol incl. hybrids* | 124,725 | 135,061 | 170,230 | 190,285 | 186,943 | 125,949 | 120,929 | 106,805 | 114,059 | 32,465 |
| Diesel incl. hybrids* | 180,340 | 188,989 | 175,501 | 141,119 | 130,423 | 98,757 | 70,782 | 60,735 | 60,493 | 15,705 |
| Gas (CNG, LNG; mono- & bivalent) | 703 | 486 | 435 | 642 | 580 | 407 | 86 | 63 | 11 | 10 |
| Plug-in hybrid electric vehicle (PHEV) | 1,101 | 1,237 | 1,721 | 2,258 | 2,156 | 7,641 | 14,626 | 13,268 | 16,956 | 4,281 |
| Battery electric vehicle (BEV) | 1,677 | 3,826 | 5,433 | 6,757 | 9,242 | 15,972 | 33,366 | 34,165 | 47,621 | 10,802 |
| Fuel cell electric vehicle (FCEV) | 9 | 5 | 0 | 7 | 19 | 14 | 14 | 14 | 10 | 0 |
| BEV registrations: Change compared to previous year | 30.91 % | 128.15 % | 42.00 % | 24.37 % | 36.78 % | 72.82 % | 108.90 % | 2.39 % | 39.39 % | -3.85 % |
| BEV share of new registrations | 0.54 % | 1.16 % | 1.54 % | 1.98 % | 2.81 % | 6.42 % | 13.91 % | 15.89 % | 19.91 % | 17.07 % |
| Further BEV of the classes L, M, N | 930 | 1,949 | 1,910 | 2,724 | 3,141 | 3,558 | 6,155 | 6,485 | 6,453 | 1,152 |
| Motorbikes/Tricycles/Quadracycles (class L) | 651 | 1,478 | 1,667 | 2,251 | 2,617 | 2,805 | 3,765 | 4,335 | 3,087 | 684 |
| Buses (classes M2 + M3) | 12 | 22 | 6 | 17 | 22 | 14 | 11 | 26 | 58 | 6 |
| Light commercial vehicles LCV (class N1; < 3.5 t) | 267 | 449 | 237 | 446 | 500 | 739 | 2,341 | 2,067 | 3,265 | 462 |
| Heavy goods vehicles HGV (class N2; 3.5 t < x ≤ 12.0 t) | 0 | 0 | 0 | 1 | 0 | 0 | 36 | 43 | 29 | 5 |
| Heavy goods vehicles HGV (class N3; > 12.0t) | 0 | 0 | 0 | 9 | 2 | 0 | 2 | 14 | 14 | 14 |
| Articulated lorries classes (class N1 + N2 + N3) | 0 | 0 | 1 | 3 | 0 | 0 | 0 | 1 | 16 | 10 |

* Hybrid electric drive not externally rechargeable

Source: Statistics Austria; Illustration: AustriaTech; Data status: 31/12 of the corresponding year respectively 31/03/2024

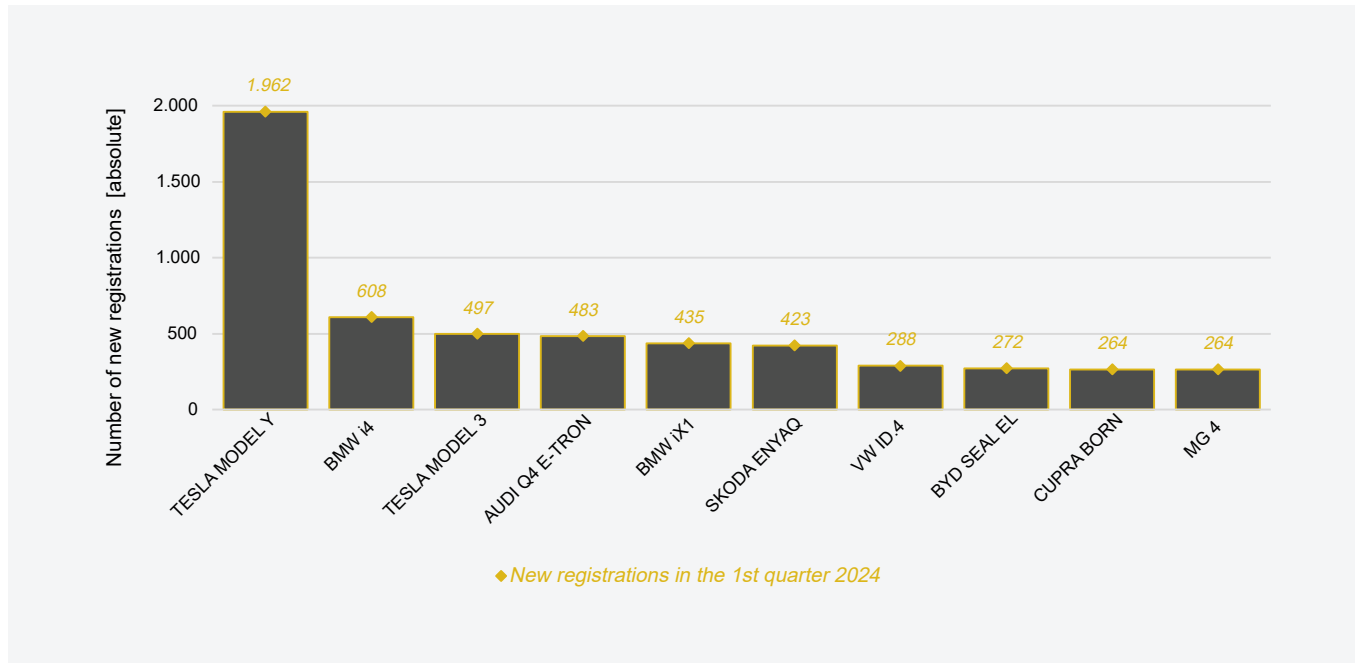
Vehicle population per year by vehicle type, fuel type or power source

| Vehicle types, fuel types or energy source | 2015 | 2016 | 2017 | 2018 | 2019 | 2020 | 2021 | 2022 | 2023 | 2024 Mar |
|---|------------------|------------------|------------------|------------------|------------------|------------------|------------------|------------------|------------------|------------------|
| Passenger vehicle class M1 | 4,748,048 | 4,821,557 | 4,898,578 | 4,978,852 | 5,039,548 | 5,091,827 | 5,133,836 | 5,150,890 | 5,185,006 | 5,197,557 |
| Petrol incl. hybrids* | 2,032,461 | 2,054,541 | 2,102,712 | 2,167,858 | 2,217,132 | 2,250,050 | 2,278,751 | 2,303,486 | 2,330,348 | 2,341,358 |
| Diesel incl. hybrids* | 2,703,950 | 2,750,270 | 2,771,738 | 2,778,552 | 2,778,732 | 2,775,925 | 2,743,683 | 2,690,025 | 2,637,123 | 2,623,931 |
| Gas (CNG, LNG; mono- & bivalent) | 5,087 | 5,373 | 5,543 | 5,877 | 6,078 | 6,063 | 5,787 | 5,512 | 5,114 | 5,037 |
| Plug-in hybrid electric vehicle (PHEV) | 1,512 | 2,287 | 3,948 | 5,710 | 8,042 | 15,237 | 29,021 | 41,580 | 56,864 | 61,145 |
| Battery electric vehicle (BEV) | 5,032 | 9,073 | 14,618 | 20,831 | 29,523 | 44,507 | 76,539 | 110,225 | 155,490 | 166,019 |
| Fuel cell electric vehicle (FCEV) | 6 | 13 | 19 | 24 | 41 | 45 | 55 | 62 | 67 | 67 |
| BEV vehicle stock: Change compared to previous year | 48.61 % | 80.31 % | 61.12 % | 42.50 % | 41.73 % | 50.75 % | 71.97 % | 44.01 % | 41.07 % | 37.50 % |
| BEV share of vehicle stock | 0.11 % | 0.19 % | 0.30 % | 0.42 % | 0.59 % | 0.87 % | 1.49 % | 2.14 % | 3.00 % | 3.19 % |
| Further BEV of the classes L, M, N | 6,532 | 7,524 | 8,913 | 10,924 | 13,314 | 16,083 | 21,564 | 26,508 | 31,668 | 32,849 |
| Motorbikes/Tricycles/Quadracycles (class L) | 5,324 | 5,907 | 7,057 | 8,614 | 10,533 | 12,565 | 15,716 | 18,621 | 20,688 | 21,372 |
| Buses (classes M2 + M3) | 138 | 149 | 143 | 154 | 161 | 172 | 174 | 202 | 242 | 248 |
| Light commercial vehicles LCV (class N1; < 3.5 t) | 1,069 | 1,467 | 1,711 | 2,141 | 2,605 | 3,330 | 5,627 | 7,582 | 10,584 | 11,046 |
| Heavy goods vehicles HGV (class N2; 3.5 t < x ≤ 12.0 t) | 1 | 1 | 1 | 2 | 2 | 3 | 40 | 81 | 105 | 110 |
| Heavy goods vehicles HGV (class N3; > 12.0t) | 0 | 0 | 0 | 9 | 10 | 10 | 4 | 18 | 29 | 43 |
| Articulated lorries classes (class N1 + N2 + N3) | 0 | 0 | 1 | 4 | 3 | 3 | 3 | 4 | 20 | 30 |

* Hybrid electric drive not externally rechargeable

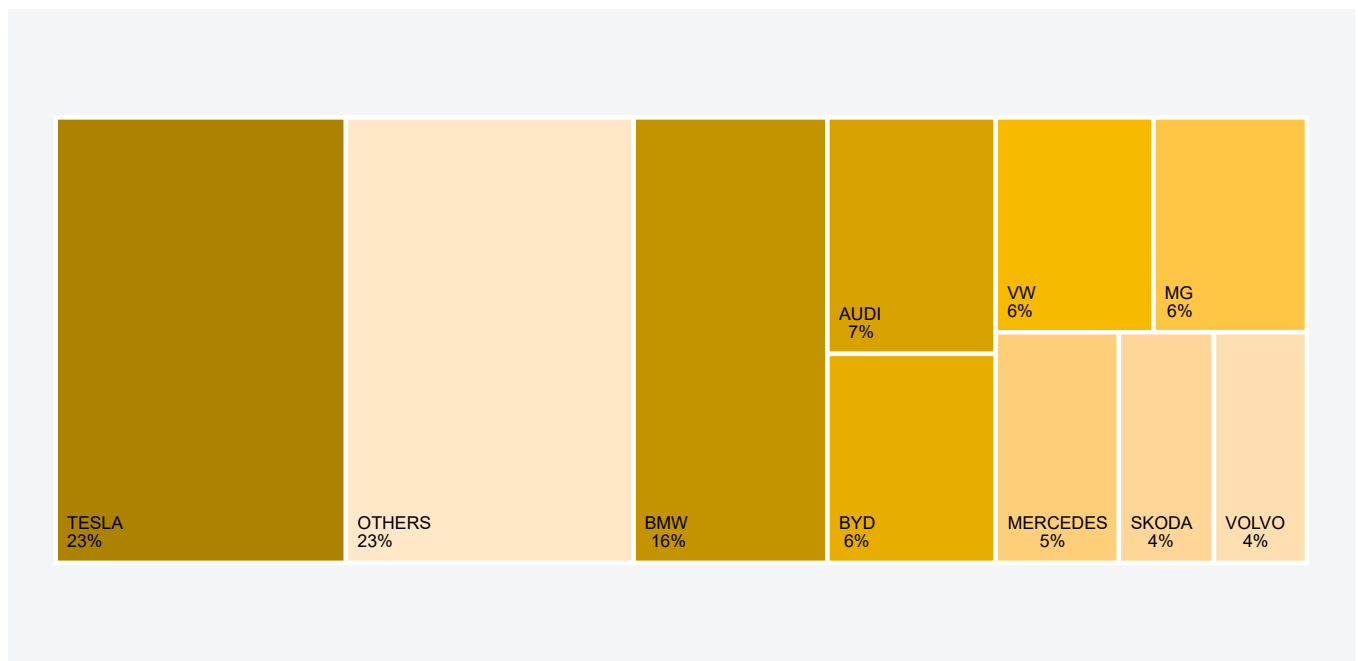
Source: Statistics Austria; Illustration: AustriaTech; Data status: 31/12 of the corresponding year respectively 31/03/2024; The 2024 population figures for PHEV (M1 and for " Further BEV of the classes L, M, N" were extrapolated on the basis of the old population (31.12.2023) and the cumulative new registrations of the current year.

Best selling BEV passenger cars (M1) by model, 1st quarter 2024



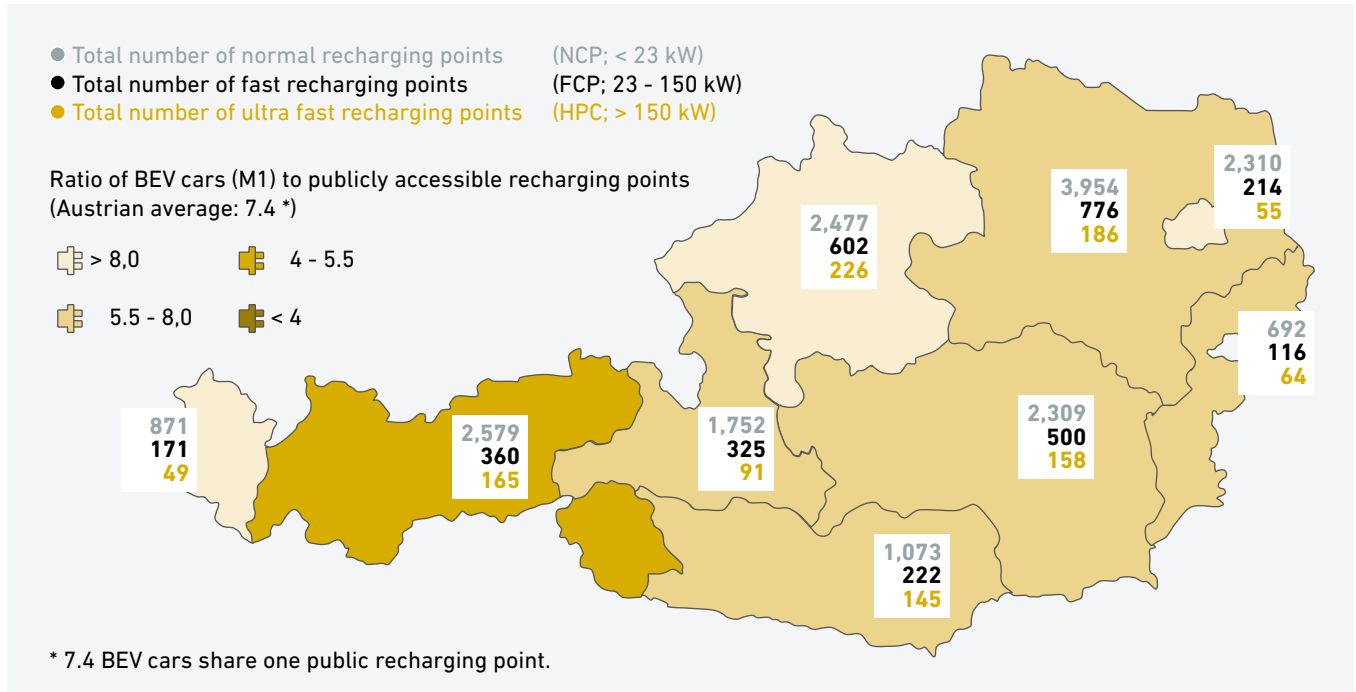
Source: Statistik Austria; Illustration: AustriaTech; Data status: 31/03/2024

Best selling BEV passenger cars (M1) by brand, 1st quarter 2024



Source: Statistik Austria; Illustration: AustriaTech; Data status: 31/03/2024

Publicly accessible recharging points per federal state, March 2024

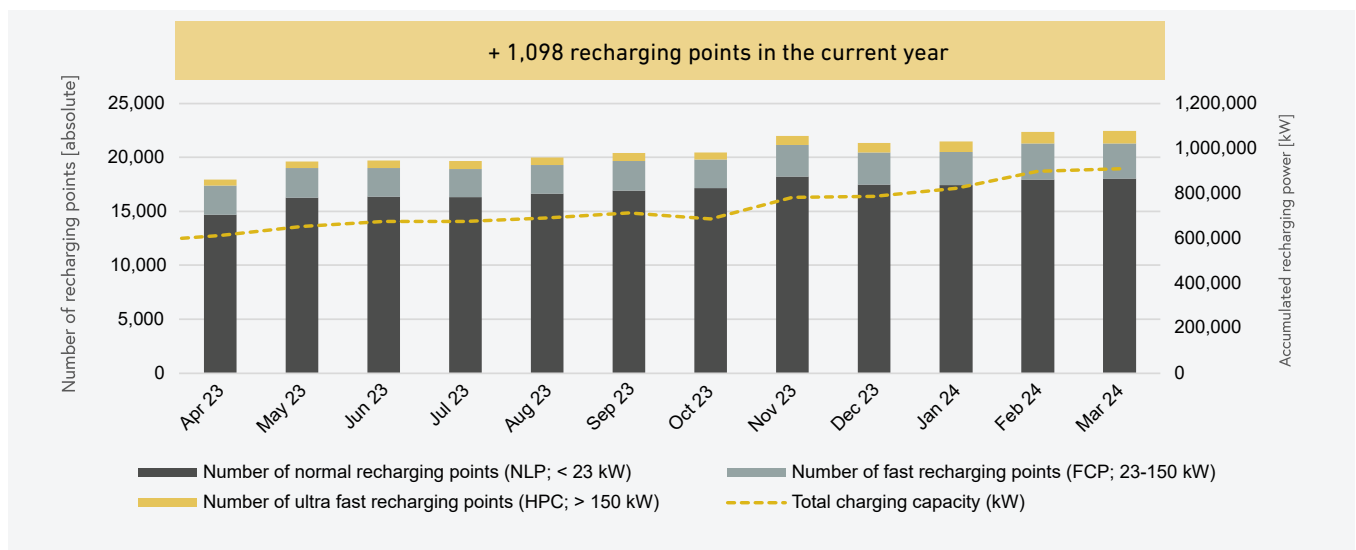


Source: E-Control, data cleansing by AustriaTech; Illustration: AustriaTech; Data status: 01/04/2024

As of 1st April 2023, the Austrian recharging network consists of 18,017 normal recharging points, 3,286 fast recharging points and 1,139 ultra fast recharging points, leading **22,442 publicly accessible recharging points** in total.

OLÉ - Austria's National Competence Center for E-Mobility supports the expansion of efficient recharging infrastructure in public spaces by improving framework conditions and funding programs. OLÉ is committed to finding the right recharging infrastructure for the respective recharging scenario. To support the ramp-up, all forms of recharging infrastructure (e.g. smart home and workplace recharging points and high power recharging points on main routes) are needed.

Publicly accessible recharging points and total recharging capacity per month, 2023-2024



Source: E-Control, data cleansing by AustriaTech; Illustration: AustriaTech; Data status: 01/04/2024

Imprint



About

The monthly publication “E-Mobility in Austria Facts & Figures” is created by AustriaTech in its role as National Competence Center For E-Mobility (“OLÉ - Österreichs Leitstelle für Elektromobilität”) and offers a compact overview of recent developments in E-mobility.

You can find the current issue of the publication series “E-Mobility in Austria Facts & Figures” at www.austriatech.at/downloads as well as at www.austriatech.at/zahlen-daten-fakten-archiv

Contact

leitstelle-elektromobilitaet@austriatech.at
<https://bit.ly/OLELinkedIn>
www.austriatech.at/leitstelle-elektromobilitaet

Media owner and publisher:

AustriaTech – Gesellschaft des Bundes für technologiepolitische Maßnahmen GmbH
 Raimundgasse 1/6, 1020 Vienna, Austria
 FN 92873d, Handelsgericht Wien
 UID number: ATU39393704
 Status: March 2024
 Tel: +43 1 26 33 444
office@austriatech.at, www.austriatech.at

Copyright Coverphoto: AustriaTech/Shutterstock

AustriaTech is 100% owned by the Federal Republic of Austria. The tasks of the subsidiary are recognized by the Federal Ministry of Climate Action, Environment, Energy, Mobility, Innovation and Technology (BMK). All publications by AustriaTech consider gender-sensitive language.

Glossary

| | |
|--------------------|---------------------------------|
| BEV: | Battery electric vehicle |
| FCEV: | Fuel cell electric vehicle |
| PHEV: | Plug-in-hybrid electric vehicle |
| BEV + PHEV + FCEV: | E-vehicles |